

WEATHER			
Nov. 15	Min. 27	Max. 38	Precip. Trace
Nov. 16	24	34	0.00
Nov. 17	31	42	0.00
Nov. 18	30	37	0.00
Nov. 19	33	39	0.26
Nov. 20	30	40	Trace
By H.K.L.			

The Chelsea Standard



HUNDRED-THIRD YEAR—No. 23

12 Pages This Week

CHELSEA, MICHIGAN, THURSDAY, NOVEMBER 23, 1972

15c per copy

SUBSCRIPTION: \$4.00 PER YEAR

Deer Kill in Area Reported Above Normal

At the start of deer season, conservation officer Robert Like has been at home much. All that is to be expected to extent, in this case, it's not a sign.

The deer kill in the county has been above normal," he reports. Evidence of this are the arrests the officer has had make so far. There was only one arrest last year.

The season has been a rich one for hunters, as far as Like can tell. There appear to be plenty of deer around, and the fresh snow has facilitated tracking.

The increase of illegal kills is usually attributed to that fact, as well as to the greater number of hunters in the field this year. It suggests there are other factors involved, too.

Like fears "there has been a general deterioration in morals in our area and permissive society. People are more out for themselves. A sportsman is becoming a rare sight."

Like is disgusted with the general run of hunter we find," he says. "They shoot at a deer, and if it doesn't drop immediately, they wait for another to come along." Like says they are losing the deer this way.

Like finds it is the younger hunters that is most often at fault. "69 to 70 percent of our hunters are under 30," he maintains. "The older hunters have been around long enough to know the ropes. They'd give it a lot of thought before breaking the laws."

The only way to nab violators is through the co-operation of those who witness the illegal hunt. "We've been getting a lot of cooperation from people who call violations," the conservation officer says. "We appreciate it."

Like argues that the popularity of camper vehicles and closed camps make his job all the harder. "They can shoot a deer, toss the back, and we never see it," he says. "We need witnesses of any sort violation to report what they see. A description of the vehicle, a back tag number, or a license plate number would be enough to catch the poacher. Like reminds would-be hunters that although the violation may seem harmless in itself, it is serious. "These people who do these things are killing everyone because they are taking a natural resource. If we had unlimited killing, there wouldn't be any game for anyone next year."

Like is very definite about the privacy an informant deserves. "It is our policy to never divulge the source of our information. We would be out of business if we did that."

He underscores this point by saying even in court, the informant is anonymous. "Any conservation officer in the state would rather go to jail, that tell." This conviction, measures the dependence on citizen co-operation.

Trespassing is another illegal activity accompanying hunting season. Again the conservation officer relies on the landowner to notify him immediately if there is a problem with unwanted visitors. The landowner can demand identification from trespassers, but if he can't get it, the conservation officer will.

The prevalence of trespassing this year may be a result of the abundance of deer. When an over-eager hunter sees a deer, just waiting for him in a field, he is often indisposed to obey no trespassing and no hunting signs. And the hunt goes on.

OEO Advisory Board Meets Next Thursday

Katy Harat, Chelsea community organizer for the Office of Economic Opportunity (OEO), is urging residents to come to the Advisory Board training session she is sponsoring next Tuesday, Nov. 28. "You'll learn how to get things done."

The Advisory Board is composed of Head Start parents. At present there are 10 official members. Through the session, which focuses on how to get involved in community organization, is primarily directed at them, all citizens can benefit from this free information.

Two officials from the Lansing office of OEO, Tony Brink and Bill McGill, will run the session which will begin at 9 a.m. and last until 3 p.m. in the Sylvan Township Hall.

Although OEO and the Advisory Board are set up to help the underprivileged, their programs are everybody's concern. The community organizer, for example, has spent the last several years trying to open a teen center in Chelsea. She arranged to get funding from the county, but she has had trouble finding a place for the center in town.

She finally found a parsonage. (Continued on page six)

Loaded Van Stolen from Plating Firm

David Longworth arrived at the Longworth Plating Co., 110 Jackson St., Monday morning to discover that a large 1966 Ford van, full of items such as clips and springs to be plated at the plant, had disappeared.

The truck was found in the west end of Detroit by Detroit Police about 1 p.m. the same day.

Chelsea Police suspect that the van was taken by a Cassidy Lake escapee who fled the correctional facility sometime late Sunday night. The truck was found near the suspect's home in Detroit.

Social Service Seeks Needy at Christmastime

Thanksgiving, in addition to being an event in its own right, marks the start of the Christmas season. Whether or not we feel it's premature, it's a fact that we all recognize as Christmas advertisements pop up in The Standard, and the store windows become "a wonderland of gift ideas."

Thanksgiving also marks the advent of seasonal thoughtfulness, which will supply Christmas gifts to homes which would be bare. Every year the Chelsea Social Service is instrumental in directing the community's desire to help the less fortunate.

Mrs. Louis Ramp of the Social Service has already begun compiling a list of those children and families who will receive Christmas baskets from the community. Names of needy families may be referred to her by concerned individuals or groups. Families in need may also refer their own names.

Names should be submitted to the Social Service office in the Municipal Building above the police station. Names may be telephoned to the office at 475-1551, the new Social Service number. The office is open Tuesdays and Thursdays from 2 p.m. to 5 p.m.

The Social Service will be collecting baskets of white gifts, and other food donated by the community's generosity. The Ann Arbor Police and the Washtenaw County Sheriff's Pig Bowl raised money for toys, which will also be included in the Christmas baskets.

The program brought the Christmas spirit to approximately 150 children and 60 adults last year.

Because the distribution of gifts will take place on Saturday, Dec. 16, this year, Mrs. Ramp is eager to have names as soon as possible. "Please call early to insure your needy family a happy Christmas," says Mrs. Ramp.

Hunters Find Deer Hard To Locate

It was the first day of hunting, and all through the park, not a hunter was bagging a deer or a hare.

That poetic description was true until 8:30 a.m., on Nov. 15, as far as The Chelsea Standard can tell. The first reported killing occurred behind the Kevin Kargel farm on Kilmer Rd., when Kargel downed a five-point buck, in this his first year of hunting.

Many hunters were disappointed to find that the sudden drop in temperatures had quited the deer, making them difficult to come upon. The newly fallen snow was no help to trackers since the deer weren't moving.

Children Pick Up \$266 for UNICEF In Halloween Drive

Church Women United and Mrs. Ronald Borders, chairman of this Halloween's UNICEF collection, are very grateful for the generous response that met Chelsea area children when they requested contributions for the United Nations Children's Fund, Oct. 29.

The child-like ghosts and goblins grossed \$266.60.

This contribution will join others from all over the country in supporting self-help programs in developing countries. Chelsea's pennies, nickels, dimes, and dollars will help carry on UNICEF's work for children in the fields of health, nutrition, education, and family and child welfare.

"The children of today will be the leaders of tomorrow," says Mrs. Borders. "Perhaps the contributions we have made this year will save the lives or provide the education for the children who will lead their countries to peace."



DISCUSSING GAME PLANS: Here basketball coach, Chuck Kelly, advises his veterans from last year's squad who will be with him again this season fighting the good fight. The returning lettermen are: kneeling, Rick Miller and Jeff Schmidt; standing from left: John Mann, Jeff Daniels, Bill Tite, Coach Chuck Kelly, and Dave Tucker. Their first contest is Tuesday, Nov. 28, at Columbia Central. The first home game will be the following Friday against Southeastern Conference rival Dexter. All JV games start at 6:30 with the varsity game following at approximately 8 p.m.

Four Area Youths Face Dope Charges

Four area youths found themselves facing dope charges last week after a round-up by the Metro Narcotics Squad and the Ingham and Livingston County Sheriff's Departments.

The suspects, who have been arrested and arraigned on charges varying from the sale of hashish to conspiracy to deliver LSD, are: Pat Singer, 20, of Gregory; John Robu, 19, of Stockbridge; Donald King, 17, of Gregory; and Felix Reyna, 18, of Stockbridge.

With the help of the Metro Narcotics Squad, the Ingham County and Livingston County sheriff's departments, moved in on Singer and Reyna at their homes on the morning of Nov. 8. Singer was picked up on a warrant charging him with the sale of hashish. Reyna is suspected of delivering LSD.

Reyna was freed on \$2,000 bond, but Singer remains lodged in the Ingham County Jail.

The other two, Robu and King, were apprehended by the Narcotics Squad and the Ingham County Sheriff's Department in the early hours of Nov. 9, at a roadblock near Mason.

They were charged with conspiracy to deliver and the delivery of LSD. Robu was released on a bond of \$4,000, while King is out after posting a \$2,000 bond.

No Report Received from Missing Girl

Elaine Hartmann, the 13-year-old 8th grader who disappeared Nov. 1, remains missing this week. Neither her parents nor the authorities have had any word as to her whereabouts.

One hope was dashed when Elaine's schoolmate, the runaway who is believed to have stolen two cars and attempted to use her mother's checks, was apprehended. Because the two girls are acquaintances, there had been some speculation that they joined together while away from their Chelsea homes. The runaway denies having seen Elaine while she was gone last week.

Elaine is 5'5", with brown hair and eyes. Concern is mounting.

Girl Suspected of Stealing Checks Nabbed By Police

The young girl who is suspected of stealing 25 of her mother's checks, her mother's car, and another vehicle, was apprehended by Ann Arbor police Sunday. She had been sought for a week.

She is presently in her mother's custody, but the Chelsea Police Department is petitioning the Juvenile Court to arraign her on charges of falsly uttering and publishing, and car theft.

She is said to have asked three fellow juveniles to cash checks she had forged. A Chelsea man claims she is the girl who took his car after he picked her up as a hitchhiker Saturday, Nov. 11.

Lottery Ticket Sale Is Brisk

A week of lottery ticket sales has proven that there's a lot of gambling blood in Michigan and it's not confined to the veins of the young and foolish.

"I was surprised at the number of senior citizens buying," says one of the local ticket agents, Luther Kusterer at Kusterer's Grocery, 11111 Hazelwood. "My middle-aged customers did most of the buying at the Inverness Inn, as they did at Thompson's Pizza. 'Maybe because they're more in debt than the rest,'" suggests Hintzen. He speculates that the retirees put up the price of a ticket in hopes of doing something for their grandchildren.

Two other lottery sales centers, Chelsea Card and Gift Shop, and Rick's Market, were besieged by hopefuls of all ages, 18 and up.

Chelsea Lanes sold most of its tickets to men but Ed Greenleaf, the owner, argues that this is no evidence of a masculine propensity to gamble. "We were out of tickets the days the ladies howled, but we had lots of re-quests," he says.

The Lanes had gone through 500 tickets in the first few days of sales, and weren't able to replenish their supply until Thursday afternoon. Similarly the Card and Gift Shop had cleaned out their stock of tickets, 750 of them, by Friday. Rick's Market was also out by Friday, having sold 1,000.

The Inverness Inn reached the 1,000 mark before the Saturday night crowd arrived. Hintzen was sure that he'd not only sell out his supply, but have a winner or two.

Only at Thompson's Pizza were the tickets going slowly. "Our volume of business is on the week-ends," the proprietor explained. "By that time, most people had bought theirs." Nevertheless, \$125 worth had left the shop, one and two tickets at a time.

Although Thompson never sold more than six tickets to one customer, other shops had large bundles go at a blow. Hintzen sold \$40 worth to one gentleman, who reportedly was buying for his entire family, grandchildren and all. Kusterer believes most of his large sales, \$10 at a time, were to men buying for fellows back at the plant. Rick's Market had a high sale of 40 tickets to one buyer.

The Card and Gift Shop had two special sales. Two unrelated individuals came in to buy 21 tickets. They believed they were sure to be lucky since they are due to turn 21 on Friday, the day of the first drawing.

Ed Greenleaf has compiled statistics on the Chelsea Lanes sales. 70 percent of his buyers bought a dollar's worth. Only 15 percent picked up a single ticket. Accompanying the buying and the hoping, is a pervasive ignorance of the workings of the lottery. All agents report having to explain the system to customers. Kusterer observed that people often ask after they have purchased their ticket. Eve Policht at the Card and Gift Shop noticed that the most common question is, "Where do I pick up money when I win?"

The agents themselves were at a loss to explain how the Michigan Lottery Commission arrived at the advertised 250 to one odds for a winner, when there are two winning numbers in every series of 1,000. (Hint: each ticket has two sets of digits which doubles the chances, in what would be a 500 to one shot.) Perhaps it is the novelty, regardless of how it works, that accounts for the massive response to the game of chance. Almost all of the local agents predict that their sales will taper off after the first flutter of excitement dies down.

It is still too early to analyze how many and what kind of Michigan residents will be making a weekly ticket purchase. As Ed Greenleaf says, "We'll get a better idea later who is going to support the lottery. I have an idea that it will be the middle income people, just the people who are paying taxes already."

Chances are there will be some disappointed participants this first time around who will never touch those little green tickets again. But think of the delight of the winners!

Happy Thanksgiving

This week's edition of The Standard is being mailed Wednesday because of the Thursday holiday. Have a happy day.

JC's Sponsor Return Trip of Bloodmobile

Community Blood Bank Suffering 179-Pint Deficit To Be Replenished

When the Community Chest sponsored Blood Bank day came and went, those who had organized it were truly disappointed. "I really don't know the reason," said Mrs. William Rademacher, chairman of the Bloodmobile program in Chelsea, "but it's the poorest turn out we've ever had."

Chelsea, a community which had used 189 pints of blood last year, and 240 pints since the first of this year, was able to squeeze only 77 pints out of its residents.

The Chelsea Jaycees decided something should be done to get the community back into the "red," and to show support of a program that saved one Chelsea woman's life by supplying 120 pints during her open heart surgery.

The organization has arranged to have the Red Cross Bloodmobile visit Chelsea again, Dec. 16. This time the giving will be done by appointment, so that givers will not have to stand in line, and so the Red Cross will know how many donors to expect.

Through a massive advertisement campaign, the Jaycees hope to drum up enough interest to make up for the 179-pint deficit that now blots the Chelsea account.

Norman Colby, the new Jaycee member in charge of publicity, says, "We are not obligated to make up the balance in our account, but we feel it's our moral responsibility to put in our share."

He points out that this makes a fine Christmas project, not just for the Jaycees, but for the entire community, since the true spirit of Christmas is giving of yourself.

Mrs. Pauline McKenna, the Red Cross director of the Bloodmobile, is gratified that the Jaycees have made this their cause. "We need blood, especially around the Christmas holidays," she says. "And we're not just calling wolf, either."

The extra drain on the blood bank supplies is the result of the

holiday rush which makes many people too busy to give, and puts many travelers on the roads. "There is an increase of sickness and accidents during the holidays, which taxes our supplies," explains Mrs. McKenna.

Colby has seen to it that the village is plastered with posters. They explain that this donation is by appointment only, and include lists on which to sign up. Citizens must sign up by Dec. 7, so that the Red Cross will know how much equipment to send.

Those signing up will be contacted by Jaycees to make an appointment for Dec. 16. It is on that day that the Red Cross bloodmobile, with its full staff of nurses and a doctor, will once again be in Chelsea, this time at the Fairgrounds Service Building.

The Jaycees will arrange for free baby-sitting facilities in the basement of that building to aid mothers going through the hour-long giving process. The refreshments at the end of the line will also be the Jaycee's responsibility.

Colby says that this is the first time Chelsea has tried the give-by-appointment procedure. He thinks it is also the first time that a second try for blood in one year has been made.

"We are not trying to take any credit away from the Community Chest," he says emphatically. "We just want to help out in balancing the books."

(Continued on page two)

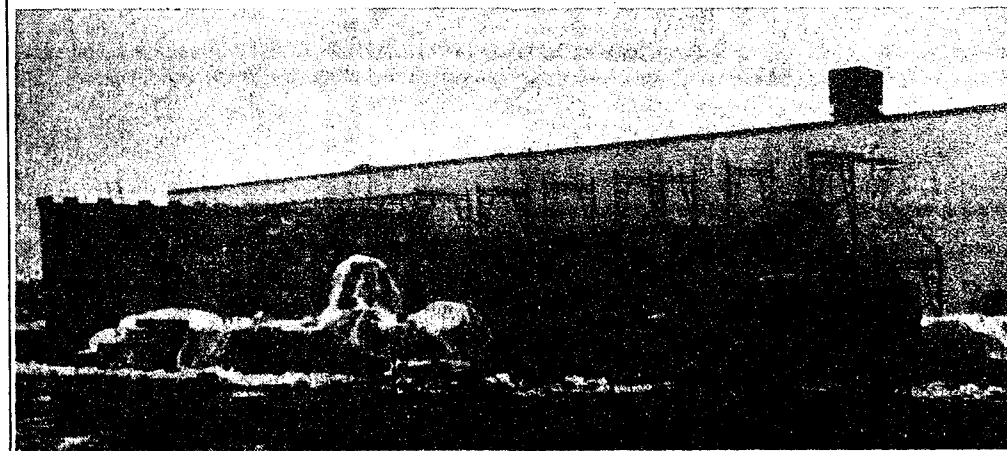
Thanksgiving Service Slated This Evening

Many local congregations will be mingling and joining in joint prayer tonight (Wednesday) at the annual Community Thanksgiving Service at the First United Methodist church at 8 o'clock.

Hymns of thanksgiving will be sung tonight and in the days to come, if the participants in Key 73 have their way. The offering collected at tonight's service will go toward this nation-wide drive which hopes to spread the Christian message.

The principal stage of this drive called an outreach through the media and evangelical calling, is just getting under way.

At the service, those gathered will give thanks with hymns, prayer, and scripture reading. The congregation will be led by the pastors of the participating churches.



PROGRESS: Dana Corp. is making headway on its new office facility and engineering lab. The structure is scheduled to be completed by mid-February. When completed the assembly department will be moved from the Buchanan St. plant and incorporated in the single facility on Sibley Rd.

Dana Constructing Addition To Sibley Rd. Plant Facilities

The Power Equipment Division of Dana Corp. has begun construction of a new office facility in Chelsea. The 11,000 square foot structure will be added to the existing Sibley Rd. plant, built in 1968, which currently houses the manufacturing departments for power take-offs and large gear boxes.

At present, the offices and assembly departments are located at the Buchanan St. plant, which was built in 1945 by Chelsea Products, Inc., and purchased by Dana Corp. in 1958.

The completion of the new offices is scheduled for mid-February 1973, and the transfer of Buchanan St. employees to the new location will start immediately thereafter. Only those required to support assembly operations will remain in the old building.

Eventually the assembly departments will be moved to the Sibley Rd. plant, also. Plans for the Buchanan St. facility, after it is vacated, are not firm at this time. Chelsea's new office addition will modernize the facility while providing room for future expansion.

Combining production and assembly departments in one plant will permit a more efficient operation. The new building will also house a new engineering lab. Its 2,400 square feet will contain a 150 electric dynamometer, a 180 h.p. diesel chassis dynamometer, and a truck and materials testing area.

The entire facility will be devoted to the development of new products, as well as current product improvement, involving truck power take-offs, split shafts and large gear boxes.



FIRST YEAR PRIZE: Kevin Kargel, hardly an avid hunter, had been persuaded by his wife, according to her, to give it a go this year. His try was quickly rewarded. On the first day of the season, Wednesday, Nov. 15, he spotted this five-point buck and bagged him by 8:30 a.m.

ask THE GOVERNOR

by William G. Milliken

Question: Will Michigan's new no-fault insurance program mean reduced premiums?

Governor: The no-fault automobile insurance legislation, one of the most significant legislative acts of the 1972 session, has long been a major goal of mine and of many other groups and individuals in the state.

No-fault auto insurance in Michigan will mean that those injured in accidents will be adequately compensated for medical expenses and wage loss, ending a system that on the average pays only half the economic loss of fatality or seriously injured people and it will mean prompt payment to those injured in automobile accidents, ending a system which makes benefit payments after an average delay of 16 months. It will not bring a wholesale reduction in insurance rates, but will mean that the consumer receives greater benefits for each premium dollar with more of that dollar going to compensate loss and less to program administration.

Question: I read that a new law has been passed which regulates land sales. Could you tell me something about it?

Governor: I recently signed House Bill 5273, a piece of legislation which I believe represents a major achievement in assuring effective truth-in-purchasing protection for buyers against fraud and misrepresentation in land sales. It is a step which I strongly recommended in a special message to the legislature early this year. With land sales rapidly increasing in Michigan, it is vitally important that those who buy property know that they are not leaving themselves open for future financial and personal catastrophe.

This new law provides for full and fair disclosure of all pertinent facts about lands being offered for sale in the state, and sets performance standards to be met by developers.

Basically, the act will seek to

insure that developers have legal title and can sell the land being offered for sale; that promised improvements will be completed, and that advertising material is not false or misleading. I believe that it is a significant step in consumer protection for land buyers in Michigan.

Question: I want to try some cross-country skiing this winter. Does Michigan have any areas that are designed specifically for that sport?

Governor: Cross-country skiing, or skitouring, has enjoyed a tremendous rise in popularity during the past several years. Many Michigan citizens, including Mrs. Milliken and I, have found that this sport offers the opportunity for outdoor recreation away from the crowds, and amid some of the most beautiful scenery in our state. Skitouring has long been a popular means of recreation and transportation in the Scandinavian countries, and was in widespread popularity in Michigan's Upper Peninsula as a method of transportation until recent years.

Michigan's rolling hills and abundant forest land are highly adapted to this popular sport. Information on the 26 private areas in our state which now have facilities for skitouring may be obtained by writing the Michigan Tourist Council, Suite 102, Commerce Center, 300 S. Capitol Ave., Lansing, 48933.

Question: What was your reaction to the Nov. 7 election?

Governor: I was extremely pleased by the impressive victories of President Nixon and Senator Griffin in Michigan. The President is the first Republican presidential candidate to carry Michigan since 1956, and Bob Griffin, who has done a great deal for Michigan, has reached another milestone in a remarkable career.

I also look forward to working with those who were elected to the legislature. We will have our work cut out for us.

I suspect that the courts before long will mandate action to do away with the inequities of our present system of excessive reliance on the property tax, and although it failed at the polls, the campaign for Proposal C established that the property tax is no longer an equitable way to finance education. The means of replacing it obviously will require further public discussion. We must now build on what we have already gained in public understanding of this highly complex issue.

Allow Enough Time for Frozen Turkey To Thaw

Be sure to allow enough time for your frozen turkey to thaw properly, a Michigan State University marketing information specialist advises.

To thaw in the refrigerator, puncture the original wrap and place the bird on a tray, Mrs. Maryann Beckman suggests. Allow one to two days for the turkey to thaw; longer for very large birds. Or, thaw the bird for four to six hours under cool running water.

Research by the U.S. Department of Agriculture shows that turkeys may be safely thawed at room temperature if kept in their original wrap and put in a closed paper bag, Mrs. Beckman reports. The bag permits complete thawing with a safe surface temperature. Large birds take about 16 hours; smaller ones, about 12 hours.

If you defrost the turkey slowly there will be less weight loss in cooking and the turkey will be juicier, Mrs. Beckman reports.

Blood Needed...

(Continued from page one)

He suggests that one reason the earlier Bloodmobile was not particularly successful is that the Chrysler Proving Grounds has set up their own Blood Bank program this year.

He hopes to counter that drain on the resources with an information campaign that will reach those who haven't realized how important it is to give.

He suggests, "If Christmas is bleeding you, do it the right way. Give to Chelsea's Blood Bank."



MICHIGAN MIRROR

by Elmer E. White, Secretary, Michigan Press Association

Two big unfinished matters await the Michigan legislature as it returns in late November.

The first, and better known, is the question of whether Michigan will use a small portion of its gas tax revenues to help pay for mass transit programs for the state's urban areas.

The second is whether the legislature will raise the bonding limit for the State Housing Development Authority from its current \$300 million level.

Both issues currently are tied up in the Senate where virtually no action was taken during the brief session held toward the end of September.

The highway package, which Gov. William G. Milliken has at the top of his priority list, has been locked in the Senate Highway Committee since last spring.

It is a perfect example of how one man can prevent the entire legislature from doing anything if he is in the right position and is determined. Committee Chairman James Fleming has held the bill in his committee all that time, never even allowing the subject to be brought up for discussion.

Since he was so adamant against the package, nothing has been done. But now, three of the committee members have asked Fleming to have a meeting the first week they are back to consider the bill in committee. Under the Senate rules, he has to bring it

up for discussion.

The subject is actually two bills which would raise the gasoline tax by two cents per gallon and allocate the increase. Three quarters of it, or 1.5 cents per gallon, would go for an accelerated highway construction program. The other one quarter, or one-half cent per gallon, would go for mass transit.

Because of Fleming's intransigence, the package is in serious trouble. Lawmakers couldn't back any sooner after the election because many of them wanted to go deer hunting rather than work.

And the short time remaining reduces any chances for its success. But the governor and the legislative backers of the program aren't going to give up on it without a fight, and there should be a great deal of action in the next few weeks behind the scenes to try to work out a package which everyone can agree on—at least everyone that is willing to consider.

The bonding authority bill is expected to be passed without much difficulty following some staff work, but negotiations which cut back its total amount.

Milliken originally proposed increasing the limit from \$300 million to \$800 million. That brought walls of protest from bankers around the state, who were afraid the authority might help persons with its lower interest loans who otherwise would have to go to a bank and its higher interest rates.

Uncle Lew from Lima Says

DEAR MISTER EDITOR:

The fellers had Thanksgiving on their mind Saturday night at the country store, but they were agreed that Santa Claus had beat em to the draw. Use to be, said Bug Hookum, that the old boy could take off from the North Pole a week before Christmas and get here in plenty of time, but now he starts out six weeks ahead and stops at ever store along the way.

Bug said it must be his age creeping up on him, but he would rather take the holidays as they come. He said he allus enjoyed Thanksgiving, cause it was truly a American observance, but lately giving thanks has been playing a second fiddle to Santa Claus. This is bad enuff, went on Bug, but Santa Claus is making so much racket he can't remember what Christmas is all about.

Seeing Bug was in a sour mood, Zeke Grubb tried to perk him up by pointing out some of the things he be thankful for. Zeke said he had saw this country to from hitching posts to parking meters, and from not needing a lawyer unless you're in jail to needing one if you're going to buy a car. Zeke said this is the only country on earth where a man can make more on welfare than working, where the rich man's got his Cadillac and the poor man's got his catalog, where a housewife's best friend is her can opener and where air is still free. Zeke went on to cheer up Bug by saying he lives in

a land where you can put soil in the bank and get paid for not raising whatever there is plenty of.

Serious speaking, the fellers did spend part of the meeting counting their blessings, but Santa Claus at Thanksgiving and wimmin on the telephone wasn't among them. It was the feller that runs the store that got them started discussing a average woman that can tie up 200 miles of telephone line with her chin for two solid hours. All you hear on these country lines is wimmin, Mister Editor, and I reckon it's about the same way in town.

Furthermore, the fellers were agreed on truth and honesty. They ain't much of it around any more. Clem Webster said politicians never tell the truth unless they're caught in it, and lying is took as the usual condition for lawyers fer the defense, fishermen and drunks, and that take in a big chunk of the population.

Clem said he had studied the situation up one side, and down the other, and he had figured more folks would be honest if they could pick their time and it wouldn't cost em nothing. Clem said he recalled attending a revival once where this feller stood up and said he'd like to repent and confess, but the grand jury was in session.

Personal, Mister Editor, I didn't join in the honesty discussion. I didn't want to embarrass the fellers by being honest.

Yours truly,

Uncle Lew.

MEET YOUR FRIENDS AT

INVERNESS INN

Your Innkeepers: Matt and Marge.
OFFICIAL SALES AGENT FOR MICH. STATE LOTTERY TICKETS
13996 North Territorial Rd., North Lake

YOUR FAVORITE MEALS

SHRIMP, CHICKEN & FISH DINNERS

BEER - WINE - LIQUOR

LUNCHEON SPECIALS

PIZZAS

"ALL" LIONS GAMES ON TV

JUST REMINISCING

(Items Taken from the Files of The Chelsea Standard)

4 Years Ago...

Thursday, Nov. 21, 1968—

Candidates for Queen of the Nickel Carnival, which is scheduled for Saturday have been nominated. They are Caryl Thornton, from the 11th grade; Kathy Powers, from the 12th; Debi Stoker, from the 10th; and Cheryl Wilkerson from the 9th grade. The girl receiving the most pennies (votes) will be crowned at the carnival.

Mrs. Kathleen Chapman returned Nov. 11, from a week of sunning, fishing, and sightseeing in Bermuda with a group of 103 Ann Arbor city employees. While there she reeled in a 10-pound barracuda.

The conviction of Steven J. Lirette, 25, who is serving a prison term of three years and nine months to 15 years for involuntary manslaughter in the Aug. 3, 1966 death of Sheriff's Deputy Leo Borders, has been upheld by the Michigan Court of Appeals.

Mike Schnaidt and Doug Weatherwax were elected to captain the 1968-69 Bulldog cage season by their teammates.

Kiwanians have selected Jack Fowler as secretary to replace the late Paul F. "Terry" Niehaus, who held the position for 40 years. A committee headed by Walter Brown was named to work out details for a suitable memorial to Niehaus.

Chelsea Fire Department put out a minor roof fire yesterday morning at Chelsea Milling Co.

Workers on the roof had apparently ignited tar when they attempted to dry the roof with heaters. Chelsea Fire Chief Gaken said the fire was confined to the roof and damages were minor.

Deer hunting season didn't last long for Charles Smith, who shot this 6-point buck at 8:10 a.m. Friday morning. Smith of Lingane Rd., hunted locally for the first time in 23 years.

14 Years Ago...

Thursday, Nov. 20, 1958—

Ishmael Picklester, drove up to The Standard office Saturday morning, the first Chelsea hunter to report getting his buck in the Waterloo Area this year. He shot the spikehorn at 8:05 a.m. on Glenn Rd., in the same spot where he was successful in getting a deer two years ago.

On Tuesday of this week, Chelsea's football squads were entertained at a dinner given by the mothers of the players. The high point of the evening was the announcement of next year's captains, Roger Herman and David R5W6.

They were introduced by the co-captains, they succeeded Loren Keizer and Don Wood. The coveted "most valuable player" award was given to halfback Loren Keizer.

David Bates, son of Mr. and Mrs. Loring Bates, 304 Washington St., has a role in "Mister Roberts," to be presented by the Michigan State University Players.

The Rev. and Mrs. S. D. Kinde plan to have as their Thanksgiving dinner guests Miss Temira Pachmuss of Australia, Miss Yura Piensuwan of Thailand, Mrs. Aziza Yacour of Egypt, and Mrs. R. C. Gatewood of Trenton. All but the latter are foreign students at the University of Michigan and were invited by the Kinds through the Protestant Foundation for International Students.

Telephone Your Club News
To GR 5-3581.

24 Years Ago...

Thursday, Nov. 25, 1948—

A truck driven by John Slat, headed east on US-12 about one-fourth mile west of Fletcher Rd. was halted by a tire blow-out and then rammed from behind by an Associated freight truck. The driver of the latter truck was seriously bruised and was treated by a local physician.

A few friends and close neighbors gathered at the home of Mr. and Mrs. George English Monday to help them celebrate their 65th anniversary.

Just six years and 10 days after the day he left Chelsea to enter the service following his induction in the fall of 1942, Pfc. Earl Koch's body arrived in Chelsea where on Sunday his burial will take place.

Thursday evening, Nov. 18, 70 parents and relatives of students will gather at Jewett Stone schoolhouse for the "Pioneer Party." Preparations have been in the makings for weeks.

Donna Kaimbach, Rowena Lentz, and Lee Max Hoppe of Salem Grove Youth Fellowship comprise the committee for the special Sunday evening service to be held Nov. 28. Mrs. C. S. Harrington, Mrs. Ed Treadwell, Mrs. Harry West, Mrs. Joseph Rogeven, and Mrs. William Tefft will be guest musicians.

At the business session of the Kiwanis Club held Monday night it was decided to make donations to the school milk fund and to the Salvation Army.

34 Years Ago...

Thursday, Nov. 24, 1938—

Tuesday, Nov. 22, was the 56th wedding anniversary of Mr. and Mrs. George T. English who have spent the greater part of their lives in Chelsea and the vicinity. A beautiful recognition service was held in their honor at the Congregational church.

Mr. and Mrs. Donald Dancer are the parents of a daughter, Sharon Marie, born Tuesday, Nov. 22, at Chelsea Private hospital.

Chelsea maintained its position and finished the current season in the select undefeated group by handing Manchester its first defeat of the season on Friday at the

ideal field, in a game which was

—NOTICE—

November 7, 1972

Notice is hereby given that the following state owned buildings located in the Pinckney Recreation Area, Washtenaw County will be sold by sealed bids. All bids shall be sent to:

"Sealed Bid"
Pinckney Recreation Area
8555 Silver Hill Road
Pinckney, Michigan 48169

The deadline for accepting bids will be November 25, 1972. Each building to be sold has been numbered. Indicate building numbers and type of building in your bid. Submit separate bids for each building. Buildings are located in Section 7, Township 1 South, Range 4 East at the former "Hermans" Resort on Halfmoon Lake.

Building No. 1 Store & Living Quarters
Building No. 2 Garage & Shed
Buildings No. 3 & 4 Two Small Cottages

Say MERRY CHRISTMAS with FLOWERS from CHELSEA GREENHOUSE

7010 LINGANE RD.

Charter Member



FTD TDS

PHONE 475-1353

For your selection we have 4,500 Poinsettias grown in our own greenhouse.

HOLIDAY RED - PINK CHEER - SNOW WHITE

Priced from \$2.99 up Single Blooms
Cash & Carry - 89c

Also a wide variety of Cut Flowers and other blooming plants for your holiday decorations.

EVERGREEN WREATHS & BLANKETS

A house full to choose from.

BLANKETS with Red Ruscus, ribbon

and your color choice of cones\$8 - \$12

WREATHS, wide variety

2-ft. untrimmed	\$ 2.00
2-ft. trimmed	\$ 3.50
3-ft. trimmed	\$ 6.00
5-ft. trimmed	\$12.00

- ★ MISTLETOE
- ★ HOLLY
- ★ CANDLE ARRANGE
- ★ Fresh & Artificial
- ★ CHRISTMAS NOVELTIES
- ★ DOOR SWAGS
- ★ PLANTERS
- ★ TERRARIUMS
- ★ CORSAGES
- ★ EVERGREEN ROPING

We Do All Phases of Wedding Flowers to fit any budget

CHELSEA GREENHOUSE

"Our 71st Year in Business"

7010 LINGANE RD., CHELSEA

PHONE 475-1353

Established 1871 The Chelsea Standard Telephone GR 5-3581

Excellence Award By Michigan Press Association
1951-1952-1960-1964-1965-1966

Walter P. Leonard, Editor and Publisher

Published every Thursday morning at 800 North Main Street, Chelsea, Mich. 48118, and second class postage paid at Chelsea, Mich., under the Act of March 3, 1879.

Subscription Rates (Payable in Advance)
In Michigan: One Year \$4.00 Six Months \$2.25 Single Copies .15
Outside Michigan: One Year \$6.00 Six Months \$3.50 Single Copies .20
Service men or women, anywhere, 1 year \$4.00

MEMBER
NATIONAL NEWSPAPER
Association - Founded 1888

National Advertising Representative:
MICHIGAN NEWSPAPERS, INC.
287 Michigan Ave.
East Lansing, Mich. 48823



All Year We Give Thanks With Top Value Stamps

TOP VALUE STAMPS

WHEN YOU SHOP AT THE

Jiffy market

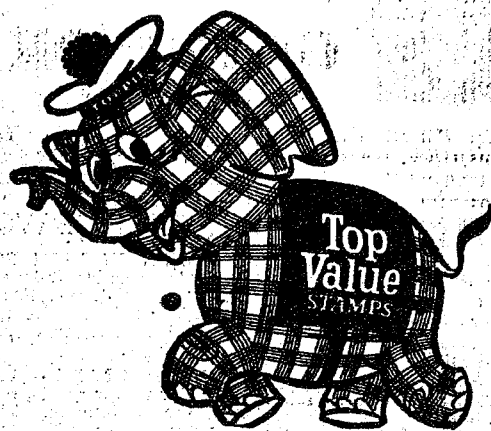
OPEN
7 DAYS
A
WEEK

COMPLETE
SUPER
MARKET

LIQUOR

Big Enough To Serve You . . . Small Enough To Know You!
CORNER OF SIBLEY & WERKNER RDS. . . CHelsea, MICHIGAN PHONE 475-1701

HOURS: 7 a.m. to 10 p.m. DAILY 7 DAYS A WEEK WE ACCEPT U.S.D.A. FOOD STAMPS SALE PRICES EFFECTIVE Thurs., Nov. 24 thru Sun., Nov. 26



NOTE: Jiffy Market will be open Thanksgiving Day for your convenience to buy the things you forgot. No special sales or prices on this day. Sale prices below for Fri., Nov. 24, Sat., Nov. 25, Sun., Nov. 26.

U. S. GRADE CHOICE

ROUND STEAK

Full Cut Top Round
\$1.09 lb. \$1.19 lb.



U. S. GRADE CHOICE

CUBE STEAKS

\$1.29 lb.

U. S. GRADE CHOICE

RUMP ROAST

\$1.19 lb.

FARMER PEET'S

HOT DOGS

12-Oz. Pkg. **59c**

OLD FASHION

SLAB BACON

59c lb.

YOUNG, TENDER

BEEF LIVER

59c lb.

HERRUD

CHUNK BOLOGNA, lb. **59c**

FRESH, HOME-MADE

PORK SAUSAGE . . lb. **59c**

FARMER PEET'S

LUNCH MEATS

12-Oz. Pkg. **69c**

- Twin Pack
- Variety Pack
- Minced Luncheon
- Olive Loaf
- Bologna
- Dutch Loaf
- Pickle-Pimento
- Macaroni-Cheese

FARMER PEET'S JIFFY MARKET PLEDGE

We guarantee that all meat products wearing the "little red barn" label will continue to be produced to the high quality standards of Michigan's meat law.

PEET PACKING CO. October, 1972.

DAILY and SUNDAY PAPERS AVAILABLE



BAR SCHEEZE . . . 59c

MARGARINE, 5 1-Lb. Pkgs. 89c



2-Lb. Box **98c**

JIFFY CAKE OR FROSTING MIXES . . . box 10c

12-OZ. BAG HERSHEY'S MINI-CHIPS . . . 39c

3-LB. JAR VELVET SMOOTH OR CRUNCHY Peanut Butter . \$1.49

CRISCO

3-Lb. Can **79c**

RISDON'S HOMOGENIZED MILK . . . gal. 89c

SALE PRICES

Fri., Nov. 24th

Sat., Nov. 25th

Sun., Nov. 26th

REG. 39c DARE ASSORTED COOKIES 3 pkgs. \$1

1/2 GAL. EASY MONDAY Liquid Detergent 49c

1-LB. CAN LIBBY'S Cream Style or Whole Kernel GOLDEN CORN . 25c

U. S. NO. 1 PONTIAC REDS POTATOES

50-Lb. Bag **\$1.99**

INTRODUCTORY PRICE 1/2 GAL. WEIGHT WATCHERS ICE CREAM . . 99c

Borden's Special "For the Family"

JUMBO TREAT VANILLA ICE CREAM 99c gal.

BORDEN'S ELSIE STIX for the Kiddies Fudge Bars . . 12 pac 49c

SANTA CLAUS or REINDEER

Blow Up 24" High Your Choice **49c ea.**

JIFFY MARKET SPECIAL from the Coca Cola Company

Coke
Tab
Sprite

48-Oz., 1-Qt., 1 Pt.
No-Return Bottles
Your Choice

3 \$1
for

No Coupon Needed

FANTA
Root Beer
Orange
Red Cream
Soda

JIFFY MARKET HOT PRICE

CRISPY FLAKE POTATO CHIPS

13-Oz. Bag

38c



GERBER'S BABY FOODS

STRAINED VEGETABLES FRUITS

Jar **8c**

CEREALS

8-Oz. Boxes

19c

JUNIOR FRUITS, VEGETABLES

7.7-Oz. Jar

15c

JIFFY MARKET

Cold Weather Gas You Can Depend On

MARATHON GAS PUMPS

Finest Top Quality Gas at Low Prices!

PLUS TOP VALUE STAMPS

JIFFY MARKET

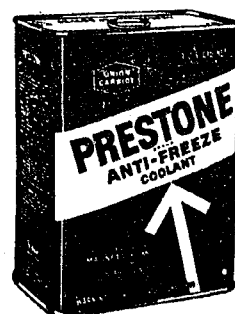
MARATHON

REGULAR GAS

35.9
Includes All Taxes

PREMIUM GAS

37.9
Includes All Taxes



\$1.89
gal.

Thank You



We appreciate your business!

GAS PUMPS & STORE OPEN 7 a.m. to 10 p.m. 7 Days a Week

U. S. Authorized Food Stamp Store



Remember Thanksgiving In Church



Ads
Taken
Till 5 p.m.
Tuesday

IT'S EASY TO BUY-SELL-RENT- HIRE & FIND WITH

WANT ADS

Just
Call
GR 5-3581

WANT ADS

The Chelsea Standard

WANT AD RATES
PAID IN ADVANCE—All regular advertisements, 50 cents for 25 words or less, each insertion. Count each line as a word. For rates on long term contracts, call 475-2580. "Blind" ads are 50¢ per line per week. Large rates—Same as cash in advance, with 15¢ discount for cash payment. No charge for space if ad is published before 5 p.m. Tuesday preceding publication. Pay in advance, send cash or stamps and save 15¢.
DISPLAY WANT ADS—Rate, \$1.10 per column inch, single column width only. 8-point and 14-point light type only. No borders or boldface type. Minimum 1 inch.
CARDS OF THANKS or MEMORIALS—Single paragraph style, \$1.00 per insertion for 50 words or less; 2¢ per word beyond 50 words.
COPY DEADLINE—5 p.m. Tuesday week of publication.

SNOWMOBILE SUITS

Men's, Ladies,
Boy's and Girl's
Good Selection at
DANCER'S

MARSHALL REALTY

440 Dexter Road
Pinckney, Mich.
1-313-878-3182

CHELSEA

5 ACRES, high, very scenic and well wooded, generous frontage on North Territorial Road. Could be split. Lake lot included.

OLDER 5-BEDROOM farmhouse and barn on 10 acres. Needs work.

DEXTER

GOOD INVESTMENT property. All electric duplex, two bedrooms each unit, easement to beautiful Silver Lake. Can be bought with \$2,500 down.

PINCKNEY

4-BEDROOM colonial home on 2 lots, family room with fireplace, GE appliances built-in, central vacuum system, fully carpeted, immediate occupancy, in restricted area.

2-BEDROOM HOME in village, has large carpeted living room, large kitchen, \$18,900.

1-BEDROOM, all-electric home in excellent condition, no maintenance, two years old, carpeted, 1½ car garage, in village.

STOCKBRIDGE

RESTAURANT — Fully equipped, great potential, on good road, living quarters included.

WE HAVE a large selection of ideal building sites in parcels of 1-20 acres or more in Dexter, Chelsea, Pinckney and Gregory area.

MARSHALL REALTY

(313) 878-8182
440 Dexter Rd., Pinckney
EVENINGS:

EVELYN 475-5553 JOANN 475-7493
DAVE 475-7275

FOR SALE — Fuller Brush products. Phone 426-3387.

WANT ADS

CLARENCE WOOD

CHILDREN IN HIGH SCHOOL? This house is ideally located. One block to High School. Four blocks to Junior High. 3-bedroom ranch, 1½ baths. Basement rec-room, patio, garage.

CAVANAUGH LAKE — Enjoy the fall and winter sports, next summer the swimming. 2-bedroom year around home. Newly remodeled and carpeted. Full basement. \$19,500. Terms possible.

OLDER HOME — Remodeled. A few blocks to schools and churches. 2 bedrooms and den (or 3 bedrooms). Carpeted. Basement. New 2-car garage. \$28,000.

OVERLOOKING GOLF COURSE — 1½ baths, patio, large garage. Fishing and swimming privileges. \$37,500. Terms.

BUILDING SITES — 2.9 acres. High, dry and wooded. Restricted to protect your investment. Other lots from 2 acres up. Most with low down payment.

CLARENCE WOOD

BROKER
Efficient PERSONAL Service
846 Flanders St., Chelsea
Phone 475-2085 or 475-8217

HAPPY THANKSGIVING

CHELSEA

HILLTOP setting with trees. Near golf course and North Lake. 4-bedroom with 2½ baths, family room, dining, 2 fireplaces.

GRASS LAKE — 3-bedroom ranch, excellent location for school, 3 bedrooms, 2 baths, recreation room. Priced at \$25,900.

2.5 ACRES wooded hilltop setting with beautiful view, 1,000 sq. ft. of living area. Exotic family room.

CLOSE TO SHOPPING and the downtown area. This completely remodeled older home. 3 bedrooms, 1½ baths.

30 ACRES with 5-bedroom home, located 3 miles east of Chelsea.

45 ACRES with 3-bedroom home, with barn, and apartment for rental.

240-ACRE FARM, 4-bedroom home, with barn.

VARIOUS BUILDING SITES to choose from.

7 Acres, S. Freer Road

2 Acres, Holmes Rd., frontage on man-made lake.

10 Acres, Dexter schools.

10 Acres, Grass Lake schools.

Frisinger Realtors

Chelsea 475-8681

Evenings:
Hoffman Koenn 475-2621
Mary Ann Staebler 475-1432
Hope Bushnell 475-7180
Paul Frisinger 475-2621
George Frisinger 475-2903

Gem Travel Trailers
and Campers

PICK UP COVERS

4" — \$100.00
28" — \$179.00 and up

Triangle Sales

Chelsea 475-8502

WANT ADS

YARD GOODS

New Knits,
Plains and Patterns

BASEMENT DANCER'S

USED CARS

1971 PONTIAC Bonneville hardtop coupe, power steering, power brakes, automatic transmission, air conditioning. Factory official's car.

1970 FORD 4-door LTD. Air conditioning, power steering, power brakes, automatic transmission, white wall tires. One owner car. Real clean.

1968 DODGE Monaco hardtop coupe. Radio, heater, power steering, power brakes, automatic transmission. One owner car. \$11,195

Harper Sales

& Service, Inc.
118 West Middle St.
Chelsea

Day Ph. 475-1366
Evening Ph. 475-1608

A-1 USED CARS

72 GRAN TORINO 2-dr.
72 PINTO 3-dr. Runabout
72 MAVERICK 2-dr.

72 FORD 4-dr.
71 TORINO 2-dr. hardtop
71 TORINO Station Wagon

70 MAVERICK
69 GALAXIE 500 4-dr.
69 FORD 4-dr.

68 TORINO 2-dr. hardtop
67 MERCURY 2-dr. hardtop
65 MUSTANG 2-dr. hardtop

Check Our New Triangle Truck Lot

70 FORD ½-ton Pickup
69 CHEV ½-ton Van
69 GMC ½-ton Pickup

69 DODGE ½-ton Pickup
69 GMC 3-ton Van

We Have A New Phone Number

475-1301

PALMER FORD

Open Every Evening Till 9:00
All Day Saturday
Chelsea 475-1301

FOR RENT — Nice 3-room upper, front entrance. Fully carpeted. Nice for retired lady or couple. 475-7638

WANTED TO RENT — 2 bedroom house, Chelsea-Manchester-Stockbridge area. For responsible mother and daughter. Beginning January. Ph. 665-9451. Suggestions appreciated.

GAR - NETT'S

Flower & Gift Shop
Your Friendly Florist
112 E. Middle St., Chelsea

PHONE 475-1400

Funeral Flowers
Wedding Flowers
Cut Flowers (arranged or boxed)
Potted Flowering Plants
Green Plants - Corsages
WE DELIVER

BIRD FEEDS — 25 and 50-lb. bags. Special price 50-lb. bag sunflower seeds. \$6.75. Cole's Elevator Co., Inc., Gregory. Call 313-498-2735.

FOR SALE — Sewing machine trade-ins. Singer "Touch and Sew", \$21.95. Singer "Touch and Sew", \$49.95. Singer "Golden Touch", does everything, \$99.95. Elna open arm automatic, \$69.95. Singer automatic, \$69.95. 25 used machines from \$19.95 to \$89.95. Koffman Sewing Machines and Fabrics, 1011 Lansing Ave. (517) 787-4264.

ELECTROLUX

VACUUM
CLEANERS

SALES and SERVICE

JAMES OOX
Ph. 426-2981 or 426-8221
Manchester



"Alvin is so pleased my Standard Want Ad sold his camping equipment—especially the hatchet!"

WANT ADS

DIAMOND ROOFING — re-roofing and repairing. Roof louvers installed. Gutters cleaned. Licensed roofer. Call 475-1129.

Headquarters for
RED WING
WORK SHOES
Foster's Men's Wear

SPECIAL PRICE — Aureomycin Crumbles, 50-lb. bags, \$6.75. Cole's Elevator Co., Inc., call 313-498-2735. Gregory.

SPECIAL PRICE — Aureomycin Crumbles, 50-lb. bags, \$6.75. Cole's Elevator Co., Inc., call 313-498-2735. Gregory.

CUSTOM
BUILDING

LICENSED & INSURED
FREE ESTIMATES

TOTAL
CONSTRUCTION
SERVICES

— Residential, commercial and industrial
— Garages
— Remodeling - Additions
— Aluminum Siding
— Roofing
— Trenching

SLOCUM
CONTRACTORS
& BUILDERS

Serving Washtenaw County
For Over 20 years
20700 OLD US-12
CHELSEA
Phone 475-8321 or 475-7611

YARNS

The Selection
is Good

DANCER'S
BASEMENT

Signs Painted
475-7391

Happy
Thanksgiving

On this special Fall day of Thanksgiving let us pause to give thanks for our many blessings in this free country of ours, and for the many deep friendships we treasure.

WE WILL BE CLOSED THANKSGIVING DAY

Jim's Union 76 Service

PHONE 475-2822 501 SOUTH MAIN
Tires - Batteries - Tune-Ups - Brake Service - Wheel Alignment

WANT ADS

CALL NOW

SAVE \$\$\$
Greenwood

Siding - Remodeling

FREE ESTIMATES
Call
Chelsea 475-2400

Contractor Servicing

Chelsea, Dexter and
Manchester Areas

Complete Home Remodeling
Inside and Outside

Specializing in extra living space, recreation rooms, kitchens and panelling. Installing all aluminum products, 5" eavestruts, custom-made awnings, windows and doors, aluminum siding in many selected colors and styles.

Please Call
DALE COOK
Chelsea 475-8863

ORGAN and PIANO

RENTALS

Available at
AL NALLI MUSIC

Chelsea 475-7215

REAL ESTATE
NEEDED

3 BEDROOM HOMES
APT. BUILDINGS
BUILDING SITES

Kern Real Estate
616 S. Main

or phone 475-8563 or 475-2403

Pine Haven Saddlery
4534 Dexter Townhall Rd.
Phone Dexter 426-4288

Complete line of English and Western equipment. 10% discount to all 4-H Club members.

Store Hours: Mon.-Sat., 9-9
Sunday, 10-9

A fine selection of
New and Used Cars

for immediate delivery

Harper Pontiac
Sales & Service

475-1306
Evenings, 475-1608

FOR SALE — Snowmobile trailers, doubles, tilt and swing, regular \$179.95, special \$139.95. All aluminum, regular \$219.95, special \$169.95. Koffman Sports Center, 1011 Lansing Ave., Jackson. (517) 787-4264.

ROOM FOR ELDERLY lady, excellent care. Call 426-8698.

DEER PROCESSING — Manchester Locker Plant, Manchester. Phone 428-5031.

New and Remodeling
Residential
Carpenter Contractor

M. A. LAWRENCE
Ph. 475-1106

WANT ADS

SEE US for transit mixed concrete.

Klump, Bros. Gravel Co.
Phone Chelsea 475-2580, 1200 Loveland Rd., Grass Lake, Mich. 49043

Fireplace Builder

Field stone mason, block and brick mason, tuck pointing.
FREE ESTIMATES
Call 475-8026 after 5 p.m.

Patrick Grammatico

STONE WORK — Fireplace and masonry. For estimates call 475-1106.

SITTER WANTED — Starting in early evening. No house work or chores required. 475-2754 before 3 p.m.

Good Time
To Order Lark
Mini Motor Homes
For Winter Vacation.
Special Deals
on Special Orders.

CLEARANCE SALE

'72 NEW CARS

'72 CHRYSLER Newport Custom, 4-dr. sedan.

'72 PLYMOUTH Fury III, 4-dr. hardtop.

'72 PLYMOUTH Fury II, 2-dr. hardtop.

Demos

'72 PLYMOUTH Fury III 4-dr. sedan, 360, auto., p.s., p.b., air cond., AM-FM, vinyl roof. Completely equipped. Save \$\$\$

'72 CHARGER, 318 auto., p.s., p.b., air cond., vinyl roof. Save \$\$\$

Quality-Used Cars

'70 BUICK Electra 225 4-dr. sedan. Air cond., sharp. \$2795

'71 MAVERICK 2-dr. sedan, 6-cyl., auto., carpets. \$1695

'69 CHRYSLER Newport 2-dr. hardtop, 383, automatic, p.s., sharp. \$1295

'71 FURY I 4-dr. sedan, 225, 3-speed, good tires. \$595

'69 MERCURY Monterey 2-dr. hardtop, V-8, automatic, p.s., p.b. \$895

'67 FURY III 4-dr. sedan, 318, auto., p.s., new tires. \$695

'67 DODGE Camp Wagon, V-8, automatic, elevating top. \$1295

'66 MUSTANG 6-cyl., 3-speed, radial tires, AM-FM radio. \$795

'66 BUICK LeSabre 4-dr. hardtop, V-8, auto., p.s., p.b. \$595

'62 CHEVY Van \$895

TRANSPORTATION SPECIALS

'65 PLYMOUTH 2-dr. sedan, 318, auto, good tires. \$145

'64 FORD 2-dr. sedan, 6-cyl., 3-speed. Good transportation \$145

Village
Motor Sales, Inc.
IMPERIAL - CHRYSLER
DODGE - PLYMOUTH
Phone 475-8681

1185 Manchester Rd., Chelsea
Hours: 8 a.m. to 6 p.m.
Tues. thru Fri. Until 9 Monday.
9 a.m. to 2 p.m. Saturday

BOWLING SNOW REMOVAL Service, residential and commercial, low rates. Prompt and dependable service. Evenings 475-2128.

WANT ADS

VACUUM CLEANERS — Electro-

lux, authorized sales and service. James Cox, Manchester. Ph. 426-2981 or 428-8221.

TREE REMOVAL DONE — Also

buyers of standing timber and walnut trees. Chelsea 475-7681.

THE LITTLE

FLOWER SHOP
3451 Waltons Rd., Chelsea
Phone GR 5-8508

Sponsoring Welcome Wagon in Chelsea/Dexter areas.

Flowers, corsages, arrangements and plants.
Weddings and funerals.

TRAVEL TRAILERS — 18-ft. and up; 10x55 ft. trailers, John R. Jones Trailer Sales, Gregory, Mich. Phone 498-2655.

Custom Kitchen Cabinets

and
Formica Tops

Made to Order
475-2857

PIANO TUNING, Chelsea and area. Facilities for reconditioning and rebuilding. Used piano sales; reconditioned grands and verticals. E. Eklund. 426-4429.

Sylvan Township

16 acres, part wooded. Excellent building location.

List your property with us for fast, efficient service.

R. D. MILLER REAL ESTATE

Real Estate Broker
475-7311
15775 Cavanaugh Lake Rd., Chelsea, Mich.

HORSES FOR SALE — Quarter and Grade. Ph. 475-1149.

SNOWMOBILE BOOTS

Men's, Ladies,
Children's

at
DANCER'S

ROBERT A. ALDER, licensed contractor. Residential building, remodeling. No job too small. 18200 Boyce Rd., Gregory, Mich. 48137. Phone 498-2539.

CHELSEA — House for sale by owner. Karl Koenigstein, with Markison and Zahn Realtors. Phone days, 663-9311; evenings, 475-8113.

Men's and Boys'
Thermal Hooded
SWEAT SHIRTS

Just Arrived at
DANCER'S

SNOWMOBILE, snow cruise sleds. Fiberglass, sleigh type. Two passenger, and three passenger. Complete with windshield and cushions. Snowmobile boots, felt pack, regular \$14.95, special \$9.95. Koffman Sports Center, 1011 Lansing Ave., Jackson. (517) 787-4264.

SCHNEIDER'S GROCERY

CHOICE MEATS - FINE FOODS

SARA LEE LARGE Pecan Cakes 79c

UNITED DAIRIES Milk, gal. jug ... 89c

WANT ADS

Chain link or redwood all sizes. Material sold for installation or we will install. 75-8147 or (517) 522-4337 estimate. 82tf

—Inlaid vinyl and lin. Also tile. Armstrong and n. Narin. Installed by craftsmen. Estimates, terms. 475-8621. 82tf

G. G. HOPPER
Building Contractors
Phone GR 5-5581
Gregory 498-2148 40tf

Automotive
Just Proofing
Cars and Trucks

Village
Motor Sales, Inc.
IMPERIAL - CHRYSLER
DODGE - PLYMOUTH
Phone 475-8661
3111 Manchester Rd., Chelsea
Hours: 8 a.m. to 6 p.m.
Sundays 9 a.m. to 1 p.m.
Mon. to 2 p.m. Saturday 12tf

Shop the
BARGAIN FLOOR
1/2 and more off
at
DANCER'S

SALE - Dryer and dish-
washer. Reasonable. 475-7486.
x23

TOES - Quality, seconds,
brushed. 7 a.m. to 8 p.m. No
sales. Carl Schoonover, 9
northwest of Chelsea on M.
at Boyce Rd., left to
Harnsworth Rd. Bring own
car. 9tf

Seamless
Aluminum Gutters
White, brown, black or green.
WILSON METAL SHOP
428-8468, Manchester 24

COPIES made. Merkel
475-8621. 41tf

Insurance Needs
in the convenience of your own
home - or mine

H. Miles, Allstate
Call GR 5-8334 after 6 p.m. 21

Wedding
or Anniversary?

ing and reception invitations
available in wide range of styles
and prices.

10% DISCOUNT
on all list prices
for wedding stationery.

ome in and let us advise you
on your needs.

he Chelsea Standard
N Main Ph. GR 5-3581 2

WANT ADS

PROFESSIONAL CARPET clean-
ing service expanding to Wash-
tenaw county. All sizes and types
of carpets cleaned, day or night.
Call 475-7205 or (517) 522-4337 for
free estimate. 52tf

CAR & TRUCK LEASING. For
details see Lytle Christwell at
Palmer Motor Sales, 475-1301. 49tf

LEHMAN WAHL
Land Appraisal
Residential
and Farm
17037 West Austin Rd.
Manchester, Mich.
Area Code 313
428-8886 2tf

REDUCE EXCESS FLUIDS with
Fluidex, \$1.69. Lose weight with
Dex-A-Diet capsules, \$1.98 at Chel-
sea Drug. 23

FOR REAL DOLLAR SAVINGS
be sure and see us before you
buy any new or used car. Palmer
Motor Sales, Inc. Your Ford Deal-
er for over 50 years. 2tf

KNAPP SHOES
For Cushion Comfort
Robert Robbins
475-7282 48tf

REPAIR SERVICE for household
refrigerators, freezers and gar-
bage disposers. Call Bill, 426-8314.
x7tf

MINI-BIKE CLOSE-OUT - Regu-
lar \$129.95, now \$99.95. Regular
\$189.95, now \$139.95. 35 mini-bikes
and mini-cycles, with savings up
to \$100. Three-wheel mud-bugs
ATV's for winter and summer. 8-
horse electric start. Regular
\$399.95 now \$299.95. 15-horse, regu-
lar \$429.95, now \$289.95. Parts and
service on all makes of mini-bikes.
Koffman Sports Center, 1011 Lansing
Ave., Jackson. (517) 787-4264. x23

SNOWMOBILE, show cruise sleds.
Fiberglass, sleigh type. Two
passenger, and three passenger.
Complete with windshield and cu-
shions. Snowmobile boots, felt pack-
regular \$14.95, special \$9.95. Koff-
man Sports Center, 1011 Lansing
Ave., Jackson. (517) 787-4264. x23

FOR SALE - New shutters for
fabric, insert 11 1/2 x 36. Ph. 475-
1467. x23

RN OR LPN wanted full- or part-
time. Call 475-8633, ask for Mrs.
Dehn. x24

APARTMENT FOR RENT - Suit-
able for mature single person or
working couple. No children or
pets. 138 E. Middle St., Chelsea.
Phone 475-2088. x23

CHALET
In a wooded setting surrounded
by recreational opportunities. 15
minutes west and south of Chel-
sea near Grass Lake. Two sun
decks. 24x12 living room. 14x14
family room. Three bedrooms.
Full basement. Quick possession.
Asking \$24,000. x23

Willis Real Estate
(517) 522-8481. x23

1972 HOOVER \$19.88 - Nice 2-
tone Hoover cleaner used just a
few times. All cleaning tools in-
cluded. Only \$19.88 cash. Call
Ypsilanti, collect, 483-4329, 9 a.m.
to 9 p.m. Electro Grand. 23

WANT ADS

KITCHEN HELP WANTED - Must
be at least 18. Apply in person.
Chelsea Restaurant. 10tf

FORMAL WEAR
RENTAL SERVICE
Proms - Weddings - Special Events
6 different colors. 23

Foster's Men's Wear
49tf

OFFICE SPACE for rent or lease.
Ph. 475-8916. 23

FOR SALE - Indian cents, post-
cards, books, foreign coins,
Australian opals and other arti-
cles. Lawrence E. Guinan, 1571
Sugar Loaf Lake. x20tf

THORNTON
475-8628

LANEWOOD - Enjoy this lovely
4-bedroom home which includes
living room, dining room, family
room, patio, private yard. Close to
elementary school. Reduced to
\$39,900. 2tf

INCOME - 2-family - a 3-bedroom
and a one-bedroom, good condi-
tion; good location, good return.

HALF MOON LAKE - 3-bedroom
ranch home on quiet lot, trees,
attached garage, just 3 years old.
Lake access - just 300 feet away.
Beautiful spot at \$36,900.

JUST LISTED - 2-bedroom home,
well constructed on one acre in a
nice country setting. Priced for
quick sale.

REMODELED - Older home in
Village, completely remodeled
12 years ago, nice lot, close to
elementary schools. \$29,000.

BRAND NEW - 3-bedroom ranch,
fireplace, family room, dining
room. A beautiful Georgian Coloni-
al home.

HILAND LAKE - Over 250 feet
of lakefront, excellent lot, nice
2-bedroom home. Ideal for retire-
ment. \$38,000.

BUILDING SITES:
2 1/2 Acres, Sylvan Road.
1 1/2 Acres, Fletcher Road.
5 Acres, N. Territorial Road.
10-16 Acres, Cavanaugh Lake Road.
1 Acre, North Lake, on Lagoon.
2 Acres, Lakefront, Cavanaugh
Lake. x23

THORNTON
823 S. Main Realtor Chelsea
Eves:
John Pierson 475-2064
Helen Lancaster 475-1198
Bob Riemenschneider 475-4121
Bob Thornton 475-8857 23

**CLOGGED
SEWER**

**Reynolds Sewer
Service**
We Clean Sewers Without Digging
Drains Cleaned Electrically

**FREE ESTIMATES
2-YEAR GUARANTEE**
Phone Ann Arbor NO 2-5277
"Sewer Cleaning Is Our Business -
Not a Side-Line" 35tf

EVINGER REAL ESTATE, Dex-
ter, 426-3286, 426-8518. x18tf

WANT ADS

NOW
Full Time
Complete
Body Shop
Service
Stop in For An Estimate
PALMER FORD
222 S. Main St.
475-1301 27tf

**SNOW
TIRE SALE**

NYLON 4 PLY WIDE 70
AND 78 SERIES

Whitewalls, warranted for the life
of tread, for road hazard and
workmanship and materials.

B70-13 wide white	\$17.95
B70-14 wide white	\$20.95
F70-14 wide white	\$21.95
G70-14 wide white	\$23.95
F70-15 wide white	\$22.95
G70-15 wide white	\$24.95
H70-15 wide white	\$25.95

**PREMIUM WHITESESTER
BELTED POLYESTER
WIDE 78 SERIES**

Warranted 100% for first 25% of
treadwear for both road hazard
and workmanship. Pro-rata for bal-
ance of tread life.

E78-15 wide white	\$25.95
F78-14 wide white	\$26.95
G78-14 wide white	\$27.95
H78-14 wide white	\$28.95
G78-15 wide white	\$28.95
H78-15 wide white	\$29.95
J78-15 wide white	\$30.95

**FREE MOUNTING
STUDS AVAILABLE**
Truck Tires Available
Charge Cards Accepted
Bank Americard
Master Charge
Standard Oil

PALMER FORD
Chelsea Since April 1912 475-1301
x24

WEDDING, Anniversary, Divorce.
Traditional or contemporary. We
can furnish the printing. John's
Shop, 475-7500 after 5 or week-
ends. x30

ROBERT PATRICK for home im-
provement, building and main-
tenance. Ph. 428-8501. 45tf

BABYSITTING in my country
home. Cavanaugh Lake Rd. Ph.
475-8033. x28

**Complete
Body Repair
Service**

Bumping - Painting
Windshield and Side Glass
Replacement
Free Pick-up & Delivery
Open Monday Until 9
CONTACT DON KNOLL
FOR FREE ESTIMATE

**Village
Motor Sales, Inc.**
IMPERIAL - CHRYSLER
DODGE - PLYMOUTH
Phone 475-8661
1185 Manchester Rd., Chelsea
Hours: 8 a.m. to 6 p.m.
Tues. thru Fri. Until 9 Monday.
9 a.m. to 2 p.m. Saturday x14tf

**ALLSTATE
INSURANCE**
AUTO - BOAT - COMMERCIAL
LIFE - HEALTH - HOME
Phone Eves. or Week-ends for
N. H. MILES, Agent
GR 5-8334

ST. BARNABAS Christmas Ba-
zaar, Nov. 30, 11 a.m. Sandwich
luncheon and tea table. All kinds
of hand-made Christmas gifts,
baked goods, and Christmas
decorations. 23

FOR SALE - Two used Frigidaire
refrigerator at 7936 Fifth St.,
Dexter. Ph. 426-8314. x23

SPECIAL CERAMIC Tile Bath
5x6, 4 feet high, materials and
labor \$169. Call 1-483-4015. x26

NORTH LAKE United Methodist
Church buffet dinner and Christ-
mas bazaar items. Tuesday, Dec.
5, starting at 5 p.m. Adults \$2.25;
children \$1; family, \$7. x24

KITTENS FREE - 8 weeks old.
Ph. 475-7992. x23tf

HAMMOND ORGAN teachers
wanted to teach in their own
homes. Call Grinnell Brothers, Ann
Arbor, 662-5667. 34tf

ST. LOUIS SCHOOL Record is for
sale at the Chelsea Card and Gift
Shop. 23tf

GARNETT'S FLOWER and Gift
Shop presents free preview of
Christmas Ideas, Sunday, Dec. 3,
2 to 5 p.m., at Sylvan Town Hall.
Free refreshments for adults and
children. No sales will be made at
the show. For more information call
Gar-Nett's Flower Shop, 475-1400. x24

SPECIAL PRICE on two new feeds
in ton lots, bulk or bagged. 40%
hog concentrate and 45% dairy
concentrate. Call for prices; Cole's
Elevator Co., Inc., Gregory. Call
313-498-2735. x24

WANT ADS

THREE KITTENS, white and gray.
free to good home. Call 475-7365.
19tf

**Low Low
Down Payment**
On New
**GOLD KEY
MORTGAGES**
For information ask your Realtor
or call 668-7555.

**Ann Arbor Federal
Savings**
Equal Housing Lender x37tf

ELECTRICAL WIRING of all
types-New and rewiring. Ph. 426-
4855. x20tf

DEPENDABLE TREE SERVICE.
Trimming cutting and removal.
Free estimates. 426-4110. x23

PROFESSIONAL cabinet maker
will make custom built book-
cases, furniture or other quality
items from select veneers or solid
hard and soft woods of your
choice. Before you spend your
money for a production line piece
call me. It doesn't cost as much
as you think. 426-8274 almost any-
time. x22tf

WANT TO EARN extra money
for Christmas? Sales position.
Call 426-3387. x23

SMALL HOUSE for rent. No pets.
Ph. 475-2653. x22

FOR SALE - Set of 4 Lane tables.
Excellent condition. Ph. 475-
8464. x23

WEDDING CAKES should be
"special." "The Cake Shoppe"
can make your wedding cake "very
special." Come in and see us at
116 W. Chicago Blvd., Tecumseh.
x23

CAKE DECORATORS - "The Cake
Shoppe", 116 N. Chicago Blvd.,
Tecumseh, is carrying a full line
of decorating supplies. Stop in
and see all the new molds, pans,
and paste colors from Wilton. We
also stock wedding cake set-ups. x23

**JIM'S
TAXIDERM**

Game heads, small game, birds,
fish fur rugs with head mounting,
flat rugs, novelties.

**SPECIALIZING
IN PHEASANTS**

17700 OLD US-12 CHELSEA
PHONE 475-2805

FIREPLACE WOOD FOR SALE.
Seasoned oak and hickory, and
other hard woods. Will deliver.
475-1471. x23tf

**ST. BARNABAS Christmas Ba-
zaar**, Nov. 30, 11 a.m. Sandwich
luncheon and tea table. All kinds
of hand-made Christmas gifts,
baked goods, and Christmas
decorations. 23

**CHRISTMAS
SALES HELP**

Now accepting applications for
additional full-time and part-time
positions both in our Apparel and
Shops for the Home Departments.
Enjoy high earnings, excellent
benefits, beautiful surroundings
and attractive work hours. For an
appointment, phone Miss Haggie,
769-7600. x23

JACOBSON'S
Liberty at Maynard
Ann Arbor x22

FOR SALE - Hotpoint electric
built-in oven. New heating ele-
ment. Good condition. Phone 475-
8739. 23

1949 DESOTO, 4-dr. black sedan,
48,000 original miles. Real good
condition. Original tires. Another
'49 Desoto for parts. They both go
together. 1-878-3825. x19tf

FEELING THAT CHRISTMAS is
bleeding you? Get the job done
right. Sign up for the Chelsea
Bloodmobile. 23

FOR SALE - Honeywell auto-
focus slide projector, \$50. Rem-
ington 15-in. chain saw, used
twice, \$75. 426-8274. x22tf

FOR SALE BY OWNER - Brick
country home on Half Moon
Lake, 1 1/2 acres, 5-bedrooms, fire-
place. Chelsea schools. \$44,900.
Call evenings and week-ends, 475-
2877. x23

GMC 4,000, 12x8 bed, 19,500 GVW.
6,000 miles on new engine. Must
be seen, \$995. 426-8274. x22tf

FOR SALE - '66 Plymouth Fury
4-door, radio, 26,000 plus miles,
good condition, by owner. 475-2325
after 5 p.m. x23

FOR SALE - '71 Ford Torino, 351
Cleveland with cam and solid
lifters, 4 speed, \$1,800 or \$600 down
and take over payments. If inter-
ested, phone 475-1407. x23

HARPER PONTIAC Sales & Serv-
ice will be closed Nov. 23, 24,
25. x23

WANTED TO BUY - Hockey equip-
ment for 9-year-old player.
Gloves, knee pads, etc. Ph. 475-
7887. 23

FEELING THAT CHRISTMAS is
bleeding you? Get the job done
right. Sign up for the Chelsea
Bloodmobile. 23

PICK-UP - 1969 Dodge 1/2 ton Ad-
venturer, V-8, automatic trans-
mission. Power steering. 15,000
actual miles. Truck is like new.
\$1,895. Lloyd Bridges Chevrolet.
475-1373. 23

SUPER stuff, sure nuff That's
Blue Lustre for cleaning car-
pets. Rent electric shampooer \$1.
Dancer's. 23

1949 DESOTO, 4-dr. black sedan,
48,000 original miles. Real good
condition. Original tires. Another
'49 Desoto for parts. They both go
together. 1-878-3825. x19tf

WANT ADS

FOR SALE - 1 acre building sites,
Chelsea area. Phone 475-2831. 16tf

CALL FRANK for all your carpet
cleaning jobs, morning or week-
end. Needs only 3 hours to dry.
Only 10c per square foot. Phone
now for free estimate, 761-4528.
All work guaranteed. 82tf

TRENCHING - 4" to 16" wide,
to 4' deep, footings, drain lines,
water and electric lines. Will in-
stall. Ph. 475-7611. 11tf

FOR SALE - 2 Ski Valt snowmo-
biles, 1970 350 SS. Both in excel-
lent condition. Phone 475-8005.
x19tf

THE TRUE SPIRIT of Christmas
is when you give of yourself.
Sign up for Chelsea Blood Bank 25

THE TRUE SPIRIT of Christmas
is when you give of yourself.
Sign up for Chelsea Blood Bank 25

SELF-STORING aluminum storm
windows. Call 475-1287. x23

BAZAAR - Crocheted and knitted
articles and lots of baked
goods. Friday, Dec. 1, at Sylvan
Town Hall on W. Middle St. 9
a.m. to 6 p.m. Sponsored by the
society Auxiliary to Veterans of
Foreign Wars No. 4075. x24

1-BEDROOM APT. for rent.
Adults only. Call after 5 p.m.
475-8072. x23

1972 DIAL-AND-STITCH \$47.75 -
Left in layaway. Sews stretch
material. Comes with a walnut
saw table. Beautiful pastel color.
Full size head. All built-in to Zig-
Zag buttonholes, overcast. Makes
fancy stitches and winds the bob-
bin automatically. Only \$47.75
cash, or terms arranged. Trading
accepted. Call Ypsilanti, collect,
483-4329 9 a.m. to 9 p.m. Grand
Electro. 23

STATION WAGON - 1968 Ford
LTD. Full power. Extra sharp,
excellent condition. \$1,295. Lloyd
Bridges Chevrolet. 475-1373. 23

TOYOTA 1970 - Two-door. Sports
Coupe. Four cylinder. Four
speed. Good economical auto-
mobile. \$1,195. Lloyd Bridges
Chevrolet. 475-1373. 23

1970 PLYMOUTH FURY III - Two-
door, hardtop. Full power. Extra
sharp car, \$1,695. Lloyd Bridges
Chevrolet. 475-1373. 23

1970 SKI-DOO with cover. Has new
engine and track. Ph. 475-2383.
x25

FOR RENT - Fair Services Center
for meetings, parties, wedding
receptions, etc. Weekdays or week-
ends. Contact John Wellnitz, phone
475-1518. x23

PRIVATE ROOM for aged per-
son, nursing care. Must be able
to walk. 475-7488. x23

IN MEMORIAM
In loving memory of a wonder-
ful husband and father, Frank L.
Reed, who passed away one year
ago November 23, 1971. Should
you go first and I remain, to walk
the road alone, I'll live in memory's
garden, dear, with happy days
we've known. In spring I'll wait
for roses red, when faded, the
lilacs blue. In early fall when
brown leaves fall, I'll catch a
glimpse of you. Should you go
first and I remain, to battle to be
fought, each thing you've touch-
ed along the way will be a hallow-
ed spot. I'll hear your voice, I'll
see your smile, the blindly I may
grope, the memory of your helping
hand, will buoy me on with hope.
Should you go first and I remain,
one thing I'll have you do; Walk
slowly down that long, long path
for soon I'll follow you. I want
to know each step you take, So I
may take the same. For someday
down that lonely road, you'll hear
me call your name. Sadly missed
by wife, sons and daughters.
Mrs. Ethel Reed
Mr. Robert Reed
and family.
Mr. Richard Reed
and family.
Mrs. Margaret Schilz
and family.
Mrs. Frances Ferry
and family.

THANK YOU
I wish to thank all my friends
and neighbors for the cards and
visits while I was at the hospital.
They were all very much appreci-
ated.
Dave Colquhoun.

IN MEMORIAM
In memory of son and brother,
Larry Julian Policht, Sr., who
passed away Thanksgiving Day
four years ago.
Mr. and Mrs. Harold Reilly,
Brothers and Sisters.

DEN 1, PACK 415 -
Den 1, Pack 415 held its regular
weekly meeting on Thursday, Nov.
16. 8 Cubs were present. We fin-
ished our Thanksgiving craft. Jer-
ry Ratzloff, David Harrison, and
Todd Sprague each told a story.
We all did Gorilla relays.
LeRoy Dreeman brought treats.
Mike Bice, scribe.

DEN 8, PACK 445 -
Den 8, Pack 445, cooked an old
fashioned Indian dinner. They
painted their bird feeders and took
them home.
Greg Ackley, scribe.

DENS 8, 9, PACK 445 -
Cub Scouts of Den 8 and 9, of
Pack 445, had their meeting. They
had their Indian dinner of beef,
corn, and cornbread, mashed po-
tatoes, and a berry drink and cof-
fee cake. Carol McLoughlin got
her 30th spanking today. She will
turn thirty next week. Treats
were supplied by Eric Pichlik.
Mike Ward, scribe.

Telephone Your Club News
To 475-1371.

St. Louis School Notes

Community Calendar



North Lake United Methodist church buffet dinner and Christmas bazaar items, Tuesday Dec. 5, starting at 5 p.m. Adults, \$2.25. Children, \$1. Family ticket, \$7. xadv24

Singles 25 and Up: Join the crowd at the "Y" in Ann Arbor on Nov. 28, from 9 to 12, for dancing, refreshments, and fun. It's Zodiac Night, and you'll learn the secrets of the stars.

Washtenaw County Stroke Club for stroke patients and spouses, Saturday, Dec. 2, 2 p.m., Parkview Medical Center, Ann Arbor. Speaker: Dr. Errol Smith, on psychological effect of a stroke patient. 475-2973, or Mary Zwimgman, 426-3648.

American Legion and Auxiliary hospital equipment available by contacting Don O'Dell at 475-8249.

Inquiries regarding the Chelsea blood bank may be directed to Harold Jones in the event that Mrs. Dudley Holmes is unavailable, or to Mrs. Pauline McKenna, American Red Cross in Ann Arbor, 971-5300.

Pap tests are free for all area women, Tuesday mornings, at St. Joseph Mercy Hospital, Ann Arbor. Call American Cancer Society office, 668-8897, for appointment.

Special attention to Chelsea Co-Op Nursery school alumni. The nursery is now taking applications for the 1973-74 sessions. Alumni have priority until Jan. 1. Anyone interested in registering their child should contact Virginia Harvey, 475-2057.

Hot meal service brought to home of elderly or disabled. Available seven days a week to people living in the Village of Chelsea. For more information call 475-2923 or 475-8014.

Chelsea Bloodmobile, Dec. 16, from 9 a.m. to 3 p.m. Sign up on posters around town by Dec. 7. Give donation by appointment only.

November business meeting of Chelsea Senior Citizens will be held Nov. 28, at the Korner House. Chelsea Fair Board Tuesday, Nov. 28, 8 p.m. at the fairgrounds.

Service Station Window Broken, Gasoline Taken

A north window at Earl's Mobil Service station, 1629 M-52, was shattered late Saturday night, allowing entry to a gas thief.

The breaking and entering was reported to Patrolman Gerald Shaw about 2 a.m. Sunday. His investigation revealed that 13.2 gallons of gasoline were missing.

The Chelsea Police Department suspects that the guilty party was a motorist who had run out of gas. This suspicion is based on the fact that nothing in the station except the gas was taken. There was some money in the open cash register which was not touched.

Pinckney Man Faces Charges in Auto Fatality

James Meyer, 43, of Pinckney, is home after posting \$500 bond and waiting trial on charges of negligent homicide and leaving the scene of an accident.

He was taken into custody Thursday, Nov. 9, because his car had been connected with the hit and run death of Laurmer Barbour, 62, of Gregory. Meyer was arraigned in 53rd District Court in Howell later the same day.

Barbour was killed Oct. 20, as he was crossing the street in front of his home to chat with a neighbor. A car, believed to be the one that killed Barbour, was located late the same day by Livingston county sheriff's deputies, and its ownership was traced to Meyer.

BIRTHS

A son, Kerry John, Nov. 21, at St. Joseph Mercy Hospital, to Dr. and Mrs. Max Blank, Freed Rd., Chelsea. The maternal grandparents are Mr. and Mrs. Vol Russ, Kansas City, Kans. Paternal grandparents are Mr. and Mrs. John Plank Harper, Kans.

A daughter, Kelli Therese, Nov. 7, at St. Joseph Mercy Hospital, to Sandra and Marvin Heim, 2905 S. Fletcher. Maternal grandparents are Mr. and Mrs. Ray Niles, Jr. Paternal grandparents are Mr. and Mrs. Earl Heim. Both couples are from Chelsea.

A daughter, Wendy Elizabeth, Nov. 5, at St. Joseph Mercy Hospital, to Mr. and Mrs. Bobbie Blough, 17838 W. Old US-12. Maternal grandparents are Mr. and Mrs. Martin Baltzell, Ypsilanti. The father's parents are Mr. and Mrs. Phillip Blough, Grass Lake.

A daughter, Dawn Renee, Nov. 15, at St. Joseph Mercy Hospital to Mr. and Mrs. John McGuire of Ann Arbor. Maternal grandparents are Mr. and Mrs. Walter Rothfuss. Paternal grandmother is Mrs. Louis McGuire of Ann Arbor.

Bazaar: Crocheted and knitted articles and lots of baked goods. Friday, Dec. 1 at Sylvan Town Hall on W. Middle St. 9 a.m. to 6 p.m. Sponsored by the Ladies Auxiliary to Veterans of Foreign Wars No. 4076. adv24

Spaulding for Children Auxiliary Monday, Nov. 27, 1:30 p.m., at the home of Cecile Bernath.

OEO Advisory Board training session 9 a.m. to 3 p.m. Nov. 28, Tuesday, for all interested persons at the Sylvan Township Hall.

Snow Must Not Be Pushed onto Highway

Property owners adjacent to trunklines should be warned against pushing snow into a highway or across a cleared highway. Anyone littering a cleared highway with snow, ice, or debris of any kind will be liable for any damage resulting from this action. Snow removal from sidewalks, private drives, parking lots, gas stations, etc. is not the responsibility of the Department of State Highways.

SENIOR CITIZENS Senior Citizens celebrated November birthdays at the Korner House on Nov. 16. 21 well-wishers were on hand to enjoy the birthday cake, which decorated the table. Hostesses for the event were Margaret Dietle and Loretta Doll.

HELLER ELECTRIC & INSULATING
Now
Edison Trained Electric Heat Dealer

Call us for estimates on all types of wiring.

We insulate old or new homes with Thermatron insulation and install electric heating systems.

CALL 475-7978
or 475-2096

School Board Briefs

At a regular Board of Education meeting Monday, Nov. 20, present were Storey, Haselschwardt, Irwin, Koenn, Straub, and Schafer. Also present were Superintendent Cameron, Business Manager Mills, Principals Conklin, Wojcicki and Benedict, Assistant Principal Lopanoski and attorney Peter Flintoff. A guest was Nancy Van Blaircum.

Meeting called to order at 8:25 p.m. by President Storey.

Motion by Schafer, supported by Haselschwardt, to accept the minutes of the Nov. 6 meeting as corrected. All ayes.

Committee Reports were given as follows.

Business Administration, Finance and Planning — Trustee Seefr. No meeting held. Committee to meet Nov. 27.

Physical Plant and Transportation — Trustee Straub. No meeting. Discussion was held regarding the new buses and new Federal Safety Standard 17.

Public Relations, Policy and Curriculum — The next School Board Newsletter is being prepared. Labor Relations — The next Fact

Finding session is scheduled for Wednesday, Nov. 22.

Action on the request of the Cassidy Lake Technical School Junior Chamber of Commerce to permit speakers to appear at the high school was tabled.

The financial statement of Oct. 31, 1972 was discussed. The following cash balances were reported: General Fund \$39,337.88; 1966 Debt Retirement Fund, \$6,286.85; 1965 Debt Retirement Fund, \$8,062; Building Site Fund, \$1,130.19.

Motion by Schafer, supported by Koenn, to retain the firm of Curtis, Bailey & Spisito of Ann Arbor to conduct the audit for 1972-73. All ayes.

A discussion was held regarding the evaluation of teachers.

Motion by Straub, supported by Schafer, that the Board be provided with copies of evaluations of all probationary teachers by Dec. 18 and that the Policy Committee formalize this concept into a written policy. All ayes.

President Storey read a letter of

resignation from the Board of Education, submitted by Mrs. Carolyn Smith.

Motion by Straub, supported by Schafer, that an appropriate commendation be prepared and presented to Mrs. Smith in recognition of her service to the Chelsea School District. Motion carried.

President Storey opened nominations for appointment of a person to fill the Board vacancy.

E. Jay Hopkins was nominated by Trustee Straub to fill the trustee vacancy until the Annual Election in June 1973.

There being no further nominations, motion by Koenn, supported by Schafer, to close the nominations and instruct the acting secretary to cast a unanimous ballot for E. Jay Hopkins. All ayes.

President Storey opened nominations for the position of Secretary of the Board of Education.

Howard Haselschwardt was nominated by Trustee Irwin for the office of Secretary. There being no further nominations, motion by Straub, supported by Schafer, to close the nominations and instruct the acting secretary to cast a unanimous ballot for Howard Haselschwardt. All ayes.

The length of the school day was discussed.

A report was received on the status of the special reading program in the elementary schools.

A communication from Andrew Ford of the Washtenaw Community College, requesting the continuation of Chelsea School District facilities for WCC courses, was received.

Motion by Straub, supported by Schafer, that the board respond favorably to the request of the Washtenaw Community College in their letter of Nov. 13. All ayes.

OEO Meeting...

(Continued from page one)

with the help of the Chelsea Methodist church, but there has been difficulty with the contract. She is hopeful that all will be official by the beginning of next month. She believes that attendance at the training session is a start in understanding the workings of OEO here in Chelsea.

Subscribe today to The Standard!

THANK YOU

Words cannot really express our appreciation and gratitude to everyone who helped in the recent campaign. Warm thanks for your support and encouragement.

Judge Sandy Elden & Family



110 N. Main Phone 475-7472

Famous Brand Toys at... LOWEST PRICES

MODEL KIT SHIPMENT JUST ARRIVED

REVELL - MONOGRAM - AMT - AURORA - MPC

PLAYROOM FURNITURE STYLED FOR THE JUNIOR SET



3-Piece Table and Chair Set
\$10⁹⁷
Red vinyl top aluminum folding table. 24" square top gives plenty of play space. 2 matching folding chairs.



Child's 32 Inch Storage Bench
\$12⁸⁸
Quilted multi-colored vinyl top on wood and hardwood construction. 32" long, 16" deep; seat 14" high.



Western Style Spring Horse
\$11⁹⁹
Jolly jumping gift for the little folk. Palomino colored polyethylene horse with safety ends on handles, 38"x20 1/2".

LAY-A-WAY NOW FOR CHRISTMAS

COMPLETE SELECTION OF BARBIE and HER FRIENDS

Ken - Tiff - PJ
Francie - Skipper

DOLLS **SKITTLE GAMES** **HO CAR SETS**
BIKES **HOCKEY GAME** **ICE SKATES**
TOY DISH SETS **SLIDS** **TONKA TRUCKS**
AURORA **TRIKES** **WAGONS** **ELECTRIC FOOTBALL**

SHOP NOW & SAVE — FROM OUR LARGE SELECTION

CUSTOM - SIZED RECESSED SCREENS

Easy to install (no holes to drill!) - A permanent chain-mesh draw screen. Made for your fireplace.

Any size to 49" x 49"
ONLY **\$32⁷⁵**

(Allow 2 weeks for delivery)

Favor Your Home with Fittings

FROM

CHELSEA LUMBER CO.

"Where the home begins"

475 - 3391



**1101 M-52
CHELSEA
OPEN 24 HRS.**

AFTER THANKSGIVING BARGAINS FRIDAY-SATURDAY, NOV. 24th and 25th

NOTICE

We will close at 10 p.m. Wednesday for Thanksgiving and re-open Friday morning at 7 a.m. Please anticipate your holiday needs so you are not caught short.

U.S.D.A. CHOICE BEEF BONELESS
**SIRLOIN TIP ROAST
OR STEAK lb. \$1.29**

U.S.D.A. CHOICE BEEF

ROUND STEAK lb. 96¢

U.S.D.A. CHOICE BEEF BONELESS ROLLED RUMP

ROAST lb. \$1.19

CENTER CUT SMOKED

PORK CHOPS . lb. 99¢

ARMOUR STAR CHUNK

Braunschweiger lb. 49¢

FARMER PEET'S HICKORY SMOKED

PICNICS lb. 49¢

FARMER PEET'S ALL-MEAT

Playtime Franks lb. 79¢

FRESH GROUND BEEF

GROUND CHUCK lb. 89¢

LEAN, TENDER

PORK CUTLETS lb. 89¢

ARMOUR STAR MIRACURE

SLICED BACON

SAVE 20¢ WITH COUPON 12-Oz. Pkg. 69¢

DEL MONICO THIN

Spaghetti or Elbo Macaroni

SAVE 15¢ WITH COUPON 2 1-Lb. Pkgs. 39¢

BURST DETERGENT

SAVE 60¢ WITH COUPON 49-Oz. Box 19¢

Northern Toilet Tissue

SAVE 12¢ WITH COUPON 4 Pack 29¢

Liquid Detergent Joy

SAVE 25¢ WITH COUPON 32-Oz. 49¢

INSTANT NESCAFE

SAVE 50¢ WITH COUPON 10-Oz. Jar \$1.29

CHRISTMAS TWINKLE LITES

40 Count White **\$1.99** 60 Count White **\$2.99**
40 Count Color **\$1.99** 60 Count Color **\$2.99**
100 Count **\$4.99** Replacement Bulbs **49¢**

POLLY QUALITY

ICE CREAM 49¢

COUNTRY QUEEN

LARGE EGGS . . . 1/2-Gal. Doz. 42¢

WIN SCHULER'S

BAR CHEEZE . . . 8-Oz. 59¢

SEAPAK FROZEN

ONION RINGS . 16-Oz. Pkg. 59¢

FLAVORITE FROZEN

ORANGE JUICE . 12-Oz. Pkgs. \$1.99

Booster Cables . . . \$2.99

Trouble Lights . . . \$1.99

Extension Cords . . \$3.99

Extension Cord . . . 99¢

No-Fault Auto Insurance Bill Becomes Law

Lansing—Gov. William G. Milliken has signed Michigan's no-fault automobile insurance legislation into law, calling it a program in which "the consumer receives greater benefits for each premium dollar."

"This new law, one of the most significant legislative acts of the 1972 session, for a long time has been a major goal of mine and of many other groups and individuals," the Governor said. "It is the product of the efforts of legislators of both parties and many public officials seeking to provide the basis for the finest system of automobile insurance in the nation."

"No-fault auto insurance in Michigan will mean that those injured in accidents will be adequately compensated for medical expenses and wage loss, ending a system that on the average pays only half the economic loss of a fatality or seriously injured person," the Governor said.

"This new law will mean prompt payment to those injured in automobile accidents, ending a system which makes benefit payments after an average delay of 10 months."

"It will not bring a wholesale reduction in insurance rates but will mean that the consumer receives greater benefits for each premium dollar with more of that dollar going to compensate losses and less to program administration."

"As this new insurance program becomes effective in Michigan, we are seeking two major results and I have directed State Commerce Director Richard Helmbrecht and Insurance Commissioner Russell Van Hooser to take whatever steps are necessary to achieve those goals."

"I first am seeking an evaluation of rate schedules to see that rates accurately reflect the legitimate cost of providing insurance coverage and secondly, I want to be sure the public has all information necessary to make informed decisions on coverage and costs of no-fault auto insurance," the Governor said.

The new law will become effective October 1, 1973.

Church of Christ Revival Series Begins Sunday

The Church of Christ on Old US-12, under the guidance of David Rushlow, will host a week-long revival meeting starting this Sunday. The week will be highlighted by singers and speakers, who have come many miles to join the activities.

In addition to the services and pot-luck dinner that will begin the program Sunday, the Madrigal Singers from Freed-Hardemann College in Henderson, Tenn., will be here to entertain with gospel music.

Two Chelsea girls, Pam Parney and Sherry Freeman, students at the college, will be returning to their home ground as members of the singing group.

The revival will continue through the week with daytime services each day at 10 a.m. Speakers from all over the state will give the sermons. Each night David A. Rushlow, minister of the Church of Christ will be speaking at 7:30.

There is a special luncheon planned for Thursday, at noon, for all church leaders, preachers and wives.

Friday the program will come to a close when the Wonderland Quartette from Milan comes to sing at 8:30 p.m.

Thanksgiving Day Services Scheduled at Our Savior Lutheran

A special service of thanksgiving will be held at Our Savior Lutheran church on Thanksgiving Day beginning at 9 a.m. The Youth Choir and congregation will join in a worship of song and praise.

The public is invited to take part in this service, according to the Rev. William H. Keller, pastor of the church.

CORRECTION

Four area students are part of the freshman class at Kalamazoo College. The fourth is Mark Thomson, brother of Mike, Steve, and Tom Thomson, who all go to Kalamazoo College. Their sister, Ann, is a sophomore at MSU.

CHELSEA FINANCE CORP.
\$25 to \$1,500

For Any Worthwhile Purpose

See or Call
FRANK HILL
at 475-8631

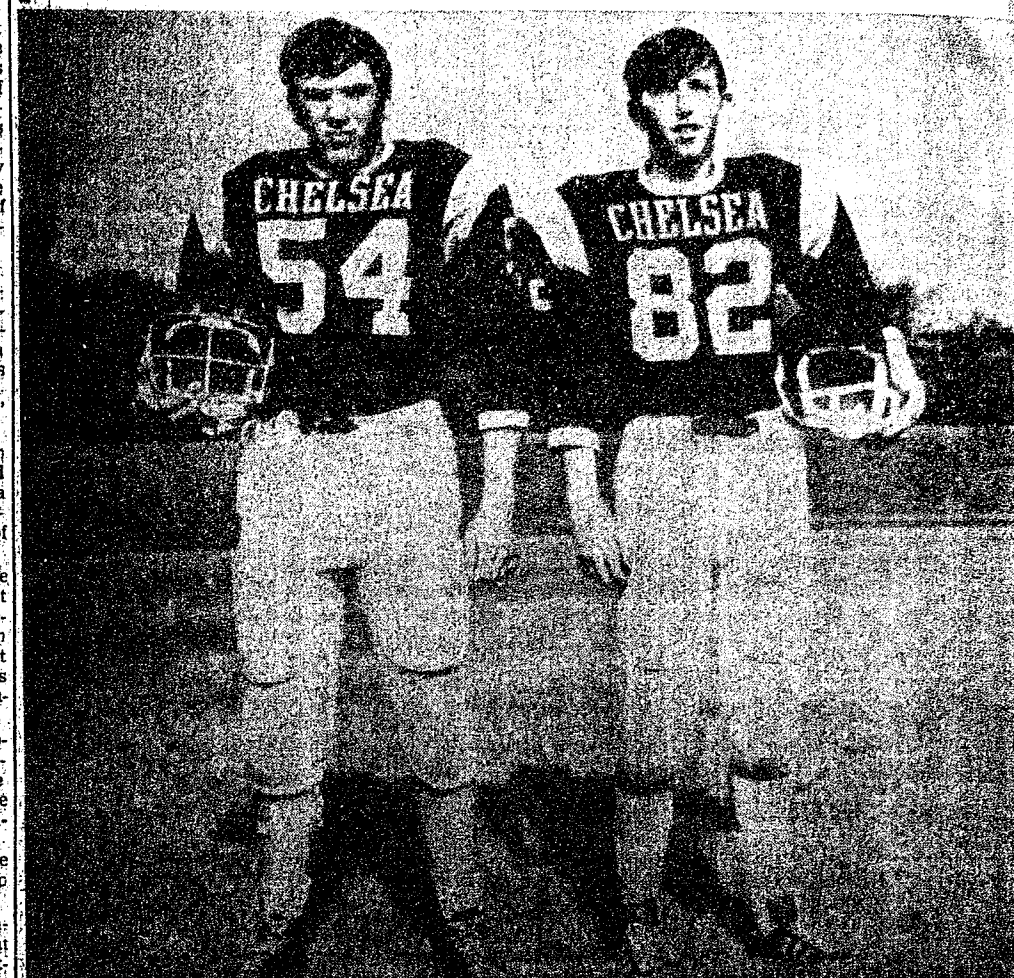
**111 PARK STREET
CHELSEA, MICH.**

Second
Section

The Chelsea Standard Pages 7-12

CHELSEA, MICHIGAN, THURSDAY, NOVEMBER 23, 1972

Gridders of the Week



RANDY YOUNG (54) has recently found himself in an "unusual" situation. He has his afternoon free. "After three months of practice every afternoon, you get used to that schedule," he says. Now that football is over, he's getting used to a new one. Randy has played football for six years, five of which as a center. "I started playing center in junior high, and liked it," he explains. Now that it's all over for this senior, he has no regrets, just a lot of good memories. Randy, his older sister, and younger brother live with their parents in town now, but they are building a place in the country. In the earlier stages, Randy was able to help with the construction. He will be living there with his parents next year, even though he hopes to be a student at the U. of M. Engineering is his field. Randy is a National Honor Society member, who likes fishing and riding his Suzuki motorcycle as hobbies. He has been a Chelsea resident ever since his family moved from Ohio 10 years ago.

DOUG HANSEN (82) has been on and off the gridiron for four years. He missed playing his freshman year, and was ousted by an injury his JV year, but he was back in the action this year. "I sort of wished it lasted longer," he says. The baseball field is another arena in which he appears. His bag is second base. Doug helps his parents out in his spare time in their snowmobile business. He enjoys riding the machines as well as selling them. He says the area near Houghton Lake is some of the best snowmobile country he knows. He argues that snowmobiles present no hazard to the woods. "They are much quieter now, and they don't tear up the ground," he explains. Doug plans to go on to college eventually, to learn the art of drafting. This would enable him to draft for architects or perhaps to design for himself. He has made a start with several years of mechanical drawing.



Come discover an exciting new world of Christmas shopping

It's all ready for you . . . come explore our "just opened" Christmas shop. Wonderful Hallmark Christmas cards, colorful party sets, candles, gift books, calendars . . . even decorations for your home. And, of course, merry Hallmark gift wrap. It's all here ready for your shopping pleasure. Come in soon and start your way to a merrier Christmas.

CHELSEA CARD & GIFT SHOP

116 S. Main St. Open Friday Till 8:30 p.m. Phone 475-7501



BOWLING NEWS



Chelsea Lanes Mixed

Standings as of Nov. 17

	W	L
Chelsea Pub	51	26
Chelsea Lanes	49	28
Chelsea Hopefuls	44	33
Chelsea Dan	42	35
Chelsea Market	41	36
Chelsea Arbor Centerless	41	36
Chelsea Shwackers	41	36
Chelsea Hour Martinizing	40	37
Chelsea Bars	40	37
Chelsea's Painting	38	39
Chelsea Pollocks	37 1/2	39 1/2
Chelsea Rwy & Henderson	36	41
Chelsea Ur Roses	36	41
Chelsea Sabon's	35	42
Chelsea's Sanitation	35	42
Chelsea ddis & Austin	34	43
Chelsea Standard	23 1/2	46 1/2
Chelsea Gossers	22	55

High series: The Pub, 2,556.

High game, women: J. Norris, 159.

High game, men: W. Cozzens, 159.

Women, 150 games: J. Norris, 159, 159; J. Barkley, 156; D. Cozzens, 180, 151, 167; B. Smith, 167, 179; H. Morgan, 157; D. Verwey, 162; B. Marsh, 156.

Men, 175 games: M. Packard, 163; A. Sannes, 214, 175; W. Cozzens, 222, 177; A. Peterson, 180; J. Huston, 200; D. Alexander, 180; J. 14, 188; D. Dettling, 185; F. Barkley, 194, 192; F. Hoffman, 180; Eder, 200.

Women, 425 series: D. Cozzens, 48; B. Smith, 450; H. Morgan, 48; D. Verwey, 450; J. Norris, 523; Marsh, 434.

Men, 500 series: M. Packard, 47; W. Cozzens, 567; A. Sannes, 4; D. Alexander, 582; F. Barkley, 542; F. Hoffman, 502.

Chelsea Suburban

Standings as of Nov. 15

	W	L
Chelsea Drug	29	15
Dairy Queen Braizer	29	15
Fletcher's Four Mobil	27	17
Pana Corp.	24	20
Chelsea Lanes	21	23
Pittsfield Plastics	21	23
Dancer's	21	23
Chelsea State Bank	21	23
State Farm	19	25
Waterloo Garage	18	26
Prisinger Realty	18	26
Artex Roll-Ons	16	28

150 games and over: J. Kipfmiller, 171; V. Harvey, 163; A. Hocking, 157, 173; B. Hafley, 153; R. McGibney, 174, 178, 216; E. Figg, 151; K. Snyder, 176; G. Baczynski, 176; B. Robeson, 151; N. Prater, 176; B. Smith, 166, 168, 162; P. Harook, 183; K. Chapman, 149; W. Beaman, 155, 155; L. Beaman, 153; S. Bowen, 190; J. Stoll, 157, 151; N. Packard, 193; J. Buku, 176, 165; D. DeLaTorre, 150; P. Elliott, 155; 164; S. Ratzlaff, 167; E. Miller, 153; S. Moor, 170; N. Collins, 180, 201.

425 series and over: J. Kipfmiller, 441; A. Hocking, 461; R. McGibney, 568; K. Snyder, 452; G. Baczynski, 446; B. Smith, 486; K. Chapman, 441; E. Whitaker, 428; L. Beaman, 428; S. Bowen, 443; J. Stoll, 436; N. Packard, 442; J. Buku, 471.

Telephone Your Club News To GR 5-3581.

Chelsea Women's Bowling Club

Standings as of Nov. 15

	W	L
Parish's Cleaners	36	8
Jiffy Mixes	33	11
Chelsea Lanes	30	14
Norris Electric	25	19
Washtenaw Engr. Co.	24	20
Chelsea Grinding	23	21
Chelsea Milling	22	22
Jiffy Market	22	22
Mark IV	22	22
Schneider's Grocery	20	24
Wolverine Bar	19	25
Bridges Chevrolet	18	26
N. American Rockwell	18	26
Ben's Arco	15	29
Alley Cats	14	30
Heydlauff's	14	30

450 series and over: N. Kern, 537; J. Hafner, 528; P. Poertner, 521; B. Fritz, 513; P. Shoemaker, 507; N. Popovich, 491; S. Klink, 485; D. Verwey, 482; R. Hummel, 480; R. Lutovsky, 480; M. E. Sutter, 479; B. Bridges, 477; G. Kuhl, 468; A. Sindlinger, 460; L. Bradbury, 454; D. Judson, 451.

150 games and over: N. Kern, 171, 174, 192; J. Hafner, 189, 189, 181; P. Poertner, 180, 153, 188; B. Fritz, 214, 165; P. Shoemaker, 172, 167, 188; N. Popovich, 180, 188; S. Klink, 161, 163, 181; D. Verwey, 159, 200; R. Hummel, 178, 173; R. Lutovsky, 170, 163; M. E. Sutter, 159, 177; B. Bridges, 177, 188; G. Kuhl, 172, 167; A. Sindlinger, 168; L. Bradbury, 169; D. Judson, 158; M. Kozminski, 153; L. Alexander, 189, 161; D. Alber, 157, 186; J. Rowe, 158; N. Kennedy, 184; P. Devulder, 155; D. Eder, 162; P. Abdon, 151, 150; S. Allen, 173; G. Penhallegon, 159; A. Knickerbocker, 152; B. Larson, 160; D. Fouty, 188; H. Ringe, 161; L. Orlovski, 162; T. Kenney, 169; A. Boham, 156.

Chelsea Nite Owl League

Standings as of Nov. 26

	W	L
Cault & LeVan Builder	37	15
Cavanaugh Lake Store	36	16
Wahl's Auto	33	19
McCalla Mobile Feeds	31 1/2	20 1/2
Steel's Heating	31	21
Pump & Pantry	30	22
Mark IV	29	23
Spoilers	27	25
Ann Arbor Kirby Co.	27	25
Foster's Men's Wear	26	26
Jack & Son Barbers	24	28
Ted's Standard	24	28
Heller Electric	23	29
Smith's Service	22	30
Chelsea Finance	21 1/2	30 1/2
Team No. 14	19	33
Slocum's	18	34
A. M. Corp.	10	42

500 series: D. Bingel, 524; R. Nix, 512; D. Buku, 501; E. Buku, 510; D. Alexander, 537; K. Harika, 519; W. Smith, 514; J. Elliott, 527; T. Dault, 523; C. Young, 555; D. Allen, 544; R. Green, 511; R. Bradley, 540; E. Heller, 516; J. Eder, 503; M. Packard, 527; G. Rentscher, 517; L. Hafner, 517; R. Herrst, 534; A. Peterson, 582; G. Stapish, 514.

200 games: W. Smith, 200; E. Seitz, 203; J. Elliott, 204; C. Young, 203; R. Bradley, 209; L. Hafner, 200; R. Herrst, 204; A. Peterson, 216, 205.

Junior Swingers

Standings as of Nov. 18

	W	L
Return of Bully Bros.	35	5
Hot Shots	31	9
"74" Strikers	26 1/2	13 1/2
The Rods	23	17
Team No. 8	20 1/2	19 1/2
The Fancy Five	18	22
Revolutions	16	24
Spectacals	14	26
YBA Scorers	11	29
The BBA's	6	34

Girls, games over 120: C. Collins, 185; B. McGuire, 126, 131, 136; L. Hafner, 150; D. Fitzsimmons, 132; M. Fahrner, 124, 123, 139; A. Kalishhek, 140; S. Schulze, 169; K. Fahr-banks, 121; D. Alexander, 132, 141.

Girls, series over 350: C. Collins, 165; B. McGuire, 393; L. Hafner, 384; T. Abdon, 360; M. Fahrner, 386; S. Schulze, 395; D. Alexander, 384.

Boys, games over 150: R. Wein-corn, 152; S. Lyntier, 171; D. Eisele, 213, 162; D. Messner, 210, 231; D. Alber, 189; D. Craft, 193, 187; M. Burnett, 156, 167; S. Bowen, 165; J. Collins, 150.

Boys, series over 450: D. Eisele, 528; D. Messner, 563; D. Alber, 473; D. Craft, 517; M. Burnett, 499.

Hi-Point Mixed League

Standings as of Nov. 14

	W	L
Weber Construction	239	157
ZAP	227	169
River Rats	223	173
First Tiras	218	178
Alley Katz	201	195
Chess Who	201	195
Ding Dats	189	210
Ding & Lings	185	211
Moving Violations	185	211
Chelsea Weatals	168	230
Stoppers	135	261

Men, series over 450: F. Steers, 499; K. Koch, 461; V. Jeffers, 470; L. Morrison, 488; O. Inbody, 480.

Men, games over 160: F. Steers, 186; K. Koch, 172; V. Jeffers, 167; L. Morrison, 174, 152; O. Inbody, 177; M. Purdy, 167; D. Carpenter, 187.

Women, series over 425: B. Hoyt, 518; V. Guenther, 456; L. White, 471; K. Chapman, 467; G. De-Smithe, 491.

Women, games over 150: S. Wal-ton, 187; B. Hoyt, 177, 165, 177; L. White, 158, 176; V. Guenther, 158, 178; K. Chapman, 150, 168; G. DeSmithe, 151, 162.

Sunday Swingers

Standings as of Nov. 19

	W	L
H & M	18	6
608	15	9
Drinkers	14	10
Strangers	14	10
Foytik-Young	14	10
The Pin-Heads	14	10
Blattner's	13	11
Right On	13	11
Sandbaggers	12	12
B&K	12	12
PM's	12	12
The Avengers	11	13
Goofballs	10	14
Coe Bees	10	14
K-Q's	9	15
Humberts	9	15
White-Dresch	7	17
Sprague-Palmer	5	19

Women, 150 games: M. Quacken-bush, 170; N. Kern, 151; J. Helm-boldt, 155; G. Weiner, 157; S. Bauers, 153; P. Foytik, 159, 161; 156; A. Schaffner, 165, 170; N. Collins, 178, 159, 207; B. Hafley, 172, 156; R. McGibney, 160, 161; A. Steinaway, 167; M. Usher, 155, 164.

Women, 400 series: M. Quacken-bush, 446; D. Meinhart, 432; N. Kern, 418; G. Weiner, 408; S. Bauers, 422; P. Foytik, 476; C. Short, 407; A. Schaffner, 448; J. Pax, 405; N. Collins, 544; B. Hafley, 470; R. McGibney, 458; A. Steinaway, 434; M. Usher, 488.

Men, 180 games: J. Ahrens, 221, 180; G. Dresch, 209, 207; J. Collins, 181, 186; J. Schaffner, 180; C. Young, 216; S. Dyer, 183, 187; D. Kern, 200, 199; D. Meinhart, 180.

Men, 450 series: B. McGibney, 488; J. Eder, 486; B. Usher, 486; J. Ahrens, 585; G. Dresch, 582; A. Steinaway, 497; D. Buku, 462; J. Collins, 537; P. McGibney, 478; J. Schaffner, 488; C. Young, 512; S. Dyer, 520; R. Weiner, 513; D. Kern, 538; D. Meinhart, 485; B. Padley, 491.

Charlie Brown & Snoopy's Friends Prep Division

Standings as of Nov. 18

	W	L
Bulldogs	18	2
Good Guys	16	4
Tigers	13	7
River Rats	11	9
Green Hornets	10	10
Pink Panthers	9	11
Seitz	8	12
BAA-UC Girls	4	16
Roadrunners	3	17
Red Barons	2	18

Boys over 140: B. Lewis, 175; 204; M. Sweeney, 150, 177; D. McGill, 176; M. Schnadt, 153; T. Sweeney, 148; B. Kalishhek, 145.

Girls over 100: T. Burnett, 101.

Junior House League

Standings as of Nov. 16

	W	L
3-D Sales & Service	56	21
A. A. Building Supply	50	27
Chelsea Lanes	47	30
Boyer Automotive	46	31
Inverness Inn	45	32
Washtenaw Engineering	45	32
Gambles	43	34
Wolverine No. 2	39	38
Michigan Bell	38	39
Smith's AAA Service	38	39
Wolverine No. 1	36	41
Jiffy Mix	34	43
N. American Rockwell	32	45
Cavanaugh Lake Store	29	48
Dana No. 3	26	51
Frisinger Realty	11	66

210 games: J. Risner, 222; T. Steele, 244; E. Greenleaf, 210; J. Toma, 222, 226; H. Burnett, 230; J. Myning, 246; G. Burnett, 232; L. Salyer, 218.

600 series: T. Dittmar, 687; W. Beaman, 633; A. Fletcher, 641; T. Steele, 603; J. Toma, 652; J. Myning, 631.

525 series: R. Ringe, 556; G. White, 532; A. Sannes, 574; D. White, 542; J. Risner, 575; E. Greenleaf, 557; H. Burnett, 530; J. Ledwidge, 528; E. Buku, 552; A. Hansen, 526; P. Smith, 540; D. Alexander, 537; A. Fleischmann, 525; L. Fahrner, 542; L. Salyer, 579; E. Harook, 524; G. Burnett.

Old Timers Bowling League

Standings as of Nov. 17

	W	L
Sanford Security Service	27	17
Hartman Ins.	26	18
Sperntall's Marathon	26	18
Bob & Otto Standard	26	18
Cloverleaf Lanes	25	19
Dino's Pin Room	24	20
Merkel Furniture	23	21
Nelson Realtors	23	21
Hotzel Service	22	22
Has Beens	22	22
Sportsman's Tavern	22	22
Team No. 18	21	23
Stein & Goetz	19	25
Milan Screw Products	18	26
Ehins & Son	18	26
Team No. 14	17	27
Colonial Lanes	14	30
High team game: Bob & Otto Standard, 905.		

High ind. series: I. Bright, 556.

Other 200 games, 500 series and over: W. Fensch, 208; W. Tyrakowski, 204; A. Frank, 202; P. Bock, 201; A. Frank, 545; E. Holl, 536; W. Fensch, 531; W. Tyrakowski, 528; C. Boyd, 528; R. Metan, 523; E. Armbruster, 518; J. Brooker, 517; H. Brown, 507; R. Schneider, 507; C. Stehle, 507; B. Poyck, 507; V. Rutz, 503; J. Otto, 502.

Teams winning three: Bob & Otto Standard, Sperntall's Marathon and Dino's Pin Room.

All-SEC Team

OFFENSE

John Pantalone (Novi)	End
Joe Stevens (South Lyon)	End
Pete Campbell (Saline)	Tackle
Jeff Schmidt (Chelsea)	Tackle
Steve Fearn (Novi)	Tackle
Dave Ward (Novi)	Guard
Dan Houle (Chelsea)	Guard
Topper Brink (Saline)	Center
Steve Lukkari (Novi)	Quarterback
Pat Gill (Saline)	Running Back
Pat Boyer (Novi)	Running Back
Jim VanWagner (Novi)	Running Back

DEFENSE

Pat Boyer (Novi)	End
Jeff Van Riper (Chelsea)	End
Ken LaFleche (Novi)	Tackle
Pete Campbell (Saline)	Tackle
Kevin Feldkamp (Saline)	Middle Guard
Mike Guenther (Saline)	Linebacker
Jim VanWagner (Novi)	Linebacker
George Danneffel (Saline)	Halfback
Pat Osborn (Saline)	Halfback
Dan Kardel (Novi)	Halfback
Jeff Marshall (Chelsea)	Halfback

Charlie Brown and Snoopy's Friends Peanut League

Standings as of Nov. 18

	W	L
Pin Crackers	28	2
Chelsea Bulldogs	15	15
Five Stooges	15	15
Flinstones	14	16
Super Strikers	11	19
Snoopy & Red Baron	7	23

Games over 70: M. Alexander, 99; L. Durgan, 105; M. A. Petsch, 100; A. Fletcher, 81; R. Klink, 95; M. Ward, 71; J. Krichbaum, 85, 73; D. Alber, 106, 100; J. Stock, 99, 97; P. Hoffman, 95, 87; B. Freeman, 97, 87; G. Eger, 97, 101; M. Steinaway, 73; D. Thompson, 83, 82.

Series over 100: M. Steinaway, 138; J. Krichbaum, 158; T. Greenleaf, 117; L. Durgan, 152; T. Miller, 113; J. Rowe, 122; M. Alexander, 156; D. Thompson, 165; T. Schulze, 122; R. Schulze, 146; M. A. Petsch, 183; A. Fletcher, 128;

The Chelsea Standard, Thursday, November 23, 1972

Watch for Ice On Bridges

Lansing—Ice on bridges, especially when adjacent highway surfaces are clear and dry, is a hidden hazard to unsuspecting motorists, the Department of State Highways warns.

Such conditions are especially prevalent in early morning in late fall when warm ground temperatures keep highway surfaces from freezing. Unprotected bridge surfaces, exposed to freezing from below as well as above, often acquire a thin coating of frozen condensed moisture.

Highway Department safety engineers caution motorists to be alert to slippery bridge conditions whenever temperatures fall below freezing.

To help warn motorists, the Highway Department has erected diamond-shaped yellow and black signs in advance of all bridges on the state highway system.

They warn: "WATCH FOR ICE ON BRIDGE."



NOW OPEN for Business

WE REPAIR AND REPLACE:

- ★ STORE FRONTS
- ★ FURNITURE TOPS
- ★ SHOWER DOORS
- ★ THERMOPANES
- ★ AUTO GLASS - Including Windshields
- ★ MIRRORS
- ★ PATIO DOORS
- ★ TUB ENCLOSURES

Free Pick-up and delivery on auto work.

Storm Door & Window Reglazing & Screens

COMMERCIAL BUILDINGS OR RESIDENTIAL

PROMPT SERVICE REASONABLE PRICES

CALL OR STOP IN

CHELSEA GLASS WORKS

WORKMANSHIP AND MATERIALS FULLY GUARANTEED

PHONE (313) 475-8667 - OPEN 8 a.m. to 5 p.m.

140 WEST MIDDLE ST. CHELSEA, MICH.

<

Value of Michigan's farm totals nearly 2 1/2 billion a year.

14th District Court Proceedings

WE HAVE the
Genuine
Warp's
FLEX-O-GLASS
CRYSTAL CLEAR
EASY TO INSTALL
DOORS & WINDOWS
Available at
CHELSEA HARDWARE

STOP COLD WINTER DRAFTS!
Easy-On Storm Kits
For WINDOWS AND DOORS
STORM WINDOW KIT Only 39¢
STORM DOOR KIT Only 49¢
Complete Kit in a box
36" x 72" tough plastic sheet, 18 ft. fiber molding and nails.
Warp Bros. Chicago 60655
Pioneers in Plastics Since 1924
AT YOUR HARDWARE, LUMBER & BUILDING SUPPLY STORE

NOTICE OF PUBLIC HEARING
Conducted by the Dexter Township Zoning Board and to be held November 27, 1972 and December 4, 1972 at 7:30 p.m. at the Dexter Township Hall located at 6880 Dexter-Pinckney Road, to consider a proposed zoning ordinance to replace the present Dexter Township Zoning Ordinance dated August 1, 1961.
The proposed zoning map and text will be available for examination at the Dexter Township Hall at the following times:
Tuesday, November 7 7:00 a.m. to 9:00 p.m.
Monday, November 13 7:00 p.m. to 10:00 p.m.
Monday, November 20 7:00 p.m. to 10:00 p.m.
Dexter Township Zoning Board
Thomas F. Ehman, Secretary

Happy Thanksgiving...
Our quality feeds for holiday fowl serve to make more delicious meals for you.

Larowe and Farm Bureau Feeds
FARMERS' SUPPLY CO.

for Blessings Big & Small...
We Give Thanks
That's what this time of year is all about!
Saying "thank you" to all our wonderful friends and customers. Thank you for giving us the chance to serve you. And thank you for your continued patronage.
For those of you who haven't yet tried our blooms and our service, may we have the pleasure of serving you soon? We'd like to extend our "thank you" to you too.
GAR-NETT'S FLOWER & GIFT SHOP
Member FTD
112 E. Middle St., Chelsea Phone 475-1400

Week of Nov. 14-20
In the 14th District Court during the week of Nov. 14-20, Betty Patterson, Whitmore Lake, pled guilty to driving without a license on her person. She had failed to renew her expired license. She was fined \$50 and costs, and assigned to three days on the Whitmore Lake Police Work program.
David West, Chelsea, pled guilty to having defective equipment and to speeding. He was fined \$41 and costs on the latter charge. The former was dismissed with \$8 costs.
Albert Lucht, Whitmore Lake, pled guilty to failing to stop and identify himself after an accident. He was fined \$35 and costs.
Dora Demerchut changed her plea to guilty of driving under the influence of liquor. She will be sentenced Dec. 15.
Peter Aho, Whitmore Lake, was found guilty of offering less than the quantity represented for sale. He was fined \$100 and costs.
Eugene Sarns, Whitmore Lake, pled guilty to driving without proof of insurance, and speeding. He was fined \$81 and costs on the latter charge, the former being dismissed with \$8 costs.
James Johnson, Whitmore Lake, pled guilty to drunk and disorderly conduct. He was fined \$35 and costs, and sentenced to five days on the Whitmore Lake Police Work Program. He also faced a variety of other charges including riding without a cycle endorsement, two counts of speeding, making unusual noise, and careless driving. He was fined a total of \$118.
Thomas Sherman, Ann Arbor, pled guilty to speeding charges. He was fined \$21 and costs.
Barbara Norton, Whitmore Lake, pled guilty to driving without a registration. She was fined \$16 and costs.
Malcolm June, Dexter, pled guilty to never acquiring a Michigan driver's license. He was fined \$25 and costs, and sentenced to five days on the Dexter Police Department Work Program.
John Gray, Pinckney, pled not guilty to speeding charges. He will be tried Dec. 15.
Deborah Cornell, Howell, pled guilty to driving without an operator's permit. The case was dismissed with \$8 costs.
Thomas Morrison, Dexter, was found guilty of driving under the influence of liquor and fined \$200 and costs. He will be on probation without drinking for a year, and must attend the Alcohol Education Series.
Wayne Spiegelberg, Vicksburg, was charged with careless driving. He will be tried Dec. 15.
Daniel Uphaus, Dexter, was found guilty of causing excessive smoke. He was fined \$16 and costs.
David Moore, Dexter, was charged with failing to use lights at night. The charge was dismissed.
Wilma Lane, Belleville, pled guilty to drunk and disorderly conduct. He was fined \$50 and costs.
Larry Henes, Saline, pled guilty to speeding charges. He was fined \$21 and costs.
Robert L. Greenfield, Jr., Ypsilanti, was arraigned on breaking and entering charges. His examination will be Nov. 21. A public defendant was assigned to his case. \$3,500 bond was set.
Robert Griffin, Saline, was arraigned on breaking and entering charges. His case was bound over until Nov. 24.
Roy Benzinger, Ann Arbor, was arraigned on charges of breaking and entering. His case was bound over until Dec. 22.
Bruce Sprattling, Clinton, changed his plea to guilty of drunk and disorderly conduct. His case was dismissed on payment of \$100 costs.
Ermette Wilson, Adrian, pled guilty to speeding. He was fined \$21 and costs.
Phillip Cook, Plymouth, pled guilty to disregarding a red signal. He was fined \$16 and costs.
Daniel Talbot, Ann Arbor, was found not guilty of felonious assault.
Alfonso Lopez, Saline, was arraigned on charges of felonious assault. The defense waived the examination. The case was bound over until Nov. 24. The defendant is represented by Public Defender M. Morris. The bond was kept at \$75,000.
Truman Stephenson, Pontiac, was arraigned on charges of driving under the influence of liquor. The case was bound over to Nov. 24.
William Smith, Saline, pled guilty to failing to tag his deer. He was fined \$17 and costs.
Leroy Wood, Dexter, pled guilty to speeding. He was fined \$39 and costs.
James Froehlich, Pinckney, was arraigned on charges of improper driving, and driving under the influence of liquor. He was fined \$20 on the first charge and placed on two years probation with no drinking. He must also attend the Alcohol Education Series.
Norman Fahrner, Chelsea, pled guilty to an amended speeding charge. He was fined \$210 and costs.
Terry Lawrence, Grass Lake, was found guilty of careless driving. He paid \$100 and costs, and \$15 to Smith's Service Station.
Ivan Tucker, Westland, was found not guilty of having inadequate saving devices in his boat.
Deborah Kadama, Ann Arbor, was charged with driving without an operator's license. The case was dismissed with \$6 costs.
Ford Salyer, pled guilty to violating his license restrictions. He was fined \$25 and costs.
Harold Millinger, Cadillac, pled not guilty to driving under the influence of liquor. His trial is set for Jan. 9.
Nancy Lucas, Saline, pled guilty to speeding charges. She was fined \$29 and costs.
Lawrence Chantelois, Saline, stood mute in response to charges of driving under the influence of alcohol. He requested a jury trial which is set for Dec. 12.
Wilbur Matthews, Saline, was found guilty of driving under the influence of liquor. He was fined \$150 and costs, and placed on a year's probation. He must attend the Alcohol Education Series.
Roger Lossing, Saline, was found guilty of making excessive noise with squealing tires. He was fined \$18 and costs.
Donald Smith, Saline, attended a pre-trial hearing to face charges of driving under the influence of liquor and driving with a suspended license. He requested a non-jury trial which was set for Jan. 9.
Charles Krinke, Ann Arbor, did not appear to face charges of driving with a revoked license. A bench warrant was issued.
Xavier Sanchez, Britton, did not appear to face charges of failing to acquire a Michigan operator's license. A bench warrant was issued.
Jack Gunnell, Ann Arbor, pled guilty to being intoxicated in a public place. He was fined \$50 and costs.
Eugene Olajos, South Lyon, faced charges of driving with a suspended license, and violating his license's restrictions. He pled guilty to the first charge and was fined \$175 and costs. He was sentenced to one year's probation and three days in jail, but the jail time was suspended. The second charge was dismissed.
George Christ, Fenton, changed his plea to guilty of driving with a suspended license. He was sentenced to a fine of \$150 and costs, plus three days in jail. The jail days were suspended.
James Manning, Whitmore Lake, pled guilty to driving left of center, driving without proof of insurance, and having defective equipment. He was fined \$21 and costs on the first charge, the same amount on the second, and \$20 and costs on the third.
Joe Merriweather, Ann Arbor, pled guilty to drunk and disorderly conduct. He was fined \$50 and costs.
Burton Haig, Dexter, pled guilty to speeding. He was fined \$21 and costs.
Dorn Myers, Ann Arbor, stood mute to charges of drunk and disorderly conduct. The trial is set for Jan. 10. He was also found guilty of assault and battery charges and fined \$50 and costs.
Donald McGowen, Wayne, pled guilty to operating a cycle in an unsafe manner. He was fined \$21 and costs.
Robert Webber, Birmingham, was found guilty of driving with a suspended license. He was fined \$50 and costs.
Carl Gulkerson, Ann Arbor, pled guilty to driving with a revoked license. He was fined \$79 and costs, and sentenced to three days in jail. He also pled guilty to driving the wrong way on a one-way street. He was fined \$21 and costs on that charge.
Michael Stevenson, Ann Arbor, pled not guilty to driving without an operator's license. His trial will be Jan. 10.
Gene Bryan, Brighton, pled guilty to charges of being a disorderly person. He was fined \$50 and costs.
Milton Rucker, Ann Arbor, was fined \$200 for fleeing a police officer. He must pay the rest of \$149.45 to the Village of Dexter. He is on a year's probation.
Ricky Leach, Hamburg, pled guilty to charges of being a disorderly person. He was fined \$50 and costs.

Consider Your Dry Skin Problem Solved!
with
Rexall
ULTRA CARE LOTION

PINT
79¢
This extra-care, rich lotion instantly soothes and softens even rough, dry skin! And it's delicately-scented... never greasy. Smooths it on, problem spots like chapped hands, elbows, knees... and see what a difference it makes!
CHELSEA DRUG STORE
Phone 475-1411

PROBLEMS??
That's why we're here!
Trust us. We're the guys who know the inside story... and our shop is equipped for any car emergency. Service is our specialty. So bring your problems to us.
Tires - Batteries - Electronic Tune-Ups
Brake Service - Wheel Alignment - Wrecker Service
Fred's Standard Service
889 S. Main, Chelsea Phone 475-2804

WE WILL BE CLOSED
THANKSGIVING DAY, THURS., NOV. 23
AND REMAIN CLOSED UNTIL NOV. 27
RE-OPEN MONDAY, Nov. 27, at 5:30 a.m.

Come in and try our meals. Where food is good and service unexcelled.
OPEN DAILY EXCEPT SUNDAY
5:30 a.m. to 7 p.m.
CHELSEA RESTAURANT
ELLA McMILLAN

CHELSEA HARDWARE
110 S. MAIN ST. PHONE 475-1121
Spectacular Christmas Sale

21.  10-Speed CYCLE BLENDER Just push a button for desired size pieces. Recipe book included. SALE PRICED \$24⁸⁸	20.  ELECTRIC CROCK-POT Slow electric cooking in stoneware for old-time flavor. SALE PRICED \$18⁹⁵	6.  Deluxe Push Button BROILER OVEN Makes large family size meals push-button easy. SALE PRICED \$27⁹⁵
42.  Mens SPEED SHAVER Microgroove floating heads for a cleaner shave. SALE PRICED \$12⁹⁹	41.  Ladies ELECTRIC SHAVER The perfect gift for the gal on the go. SALE PRICED \$6⁹⁹	7.  ELECTRIC FRY PAN Attractive buffet styling. Removable heat control. SALE PRICED \$16⁹⁵
51.  AM/FM Digital CLOCK RADIO Sharp, modern design. Wake to your favorite music. SAVE \$5.07 \$29⁸⁸	38.  7 1/2-Inch CIRCULAR SAW Cuts lumber up to 2" thick, 45° bevel. SALE PRICED \$19⁹⁹	104.  6-Foot SHAPED FIR TREE The perfect tree for the holidays. SAVE \$5.00 \$29⁹⁹
108.  15-Light INDOOR LIGHT SET If one light goes out, rest stay lit. SALE PRICED \$1⁹⁹	105.  Economy TREE STAND Large water cup keeps tree fresh. SALE PRICED 99¢	78.  20-Foot Remote Control EXTENSION CORD On-off control up to 20-feet from appliance. SALE PRICED \$1⁹⁹
		94.  Seven Piece TOOL SET Includes most-used tools for minor repairs. SALE PRICED \$7⁹⁹

VILLAGE OF CHELSEA
COUNTY OF WASHTENAW,
MICHIGAN

At a Regular Meeting of the Village Council of the Village of Chelsea, County of Washtenaw, Michigan, held in the Village of Chelsea, on November 17, 1972, at 8:00 o'clock Eastern Standard Time.

PRESENT: Councilmen Barton, Dmoch, Gorton, Musbach and Wood.

ABSENT: Councilmen None.

Following preamble and resolutions were offered by Councilman and supported by Councilmen Wood:

RESOLVED, by resolution adopted November 3, 1972, the Village of Chelsea, County of Washtenaw, Michigan, do hereby authorize the issuance of \$500,000.00 General Obligation Sanitary Bonds; and

WHEREAS, it is necessary to aid resolution;

NOW THEREFORE, BE IT RESOLVED THAT:

Sections 1 and 7 of said resolution, dated October 3, 1972, be amended to read as follows:

Sections of the Village of Chelsea, County of Washtenaw, Michigan, do hereby authorize the issuance of \$500,000.00 GENERAL OBLIGATION SANITARY SEWER BOND, to be issued in the sum of five hundred thousand (\$500,000.00) for the purpose of paying the cost of acquiring and constructing improvements and extensions to the sanitary sewer system of the Village of Chelsea, consisting of:

sewers, force mains and pumping stations, together with the necessary attachments and appurtenances thereto and the necessary cost of way therefor, being the purpose for which the bonds were issued by the qualified electors of the Village, said issue to consist of one hundred bonds of the denomination of \$5,000.00 each, numbered consecutively in direct order of maturity from 1 to 100, inclusive, dated as of January 1, 1973, and maturing serially as follows:

VILLAGE BEAUTY SALON

LORETTA - CINDY - EULA
CHERYL - JANICE - CAROL

107 N. MAIN PHONE 475-1671
Please note new telephone number

OPEN MONDAY THRU SATURDAY
Evenings By Appointment

THANKSGIVING

Cause for Giving Thanks

Thanks be for milk . . . so good so many ways . . . at Thanksgiving or any time. Young and old alike enjoy its delicious goodness!

Serve milk at your Thanksgiving feast. Plain or chocolate, it's refreshing, delicious and chock-full of food values. Use it to enrich your cooking, too.

Hickory Ridge Farm Dairy
(Successor to Weinberg Dairy)
Stockbridge, Mich. Phone (517) 851-3000

WINANS JEWELRY

Keepsake
REGISTERED DIAMOND RINGS

WINANS JEWELRY

The One Gift She'll Treasure Forever.

Show her how much you care by giving a Keepsake Diamond Ring. Keepsake guarantees diamond perfection, trade-in value and protection against diamond loss.

JUD 8000 WED. RING 000
ESURA 8000 TO 000
MOON DRAB 8000 TO 000
VENUS 8000 ALSO 000 TO 000 WED. RING 000
CARTER 8000 WED. RING 000

as part of its regular service, notices of sale of municipal bonds. No further interest payable on bonds called for redemption shall accrue after the date fixed for redemption, whether presented for redemption or not, provided the Village has money available for such redemption with the paying agent.

7. The Village Clerk is authorized and hereby ordered to publish notice of sale of the bonds herein authorized in the Michigan Investor, Detroit, Michigan and The Chelsea Standard, in the Village, which notice of sale shall be in substantially the following form:

OFFICIAL NOTICE OF SALE
\$500,000.00
VILLAGE OF CHELSEA
COUNTY OF WASHTENAW,
STATE OF MICHIGAN
GENERAL OBLIGATION
SANITARY SEWER BONDS

SEALED BIDS for the purchase of the above bonds will be received by the undersigned at the Village Hall located at 104 E. Middle Street, Chelsea, Michigan, on the day of _____, 1972, until _____ o'clock _____ m., Eastern Standard Time, at which time and place said bids will be publicly opened and read.

BOND DETAILS: Said bonds will be coupon bonds of the denomination of \$5,000.00 each, dated January 1, 1973, numbered in direct order of maturity from 1 upwards and will bear interest from their date of maturity on October 1, 1973, and semi-annually thereafter.

Said bonds will mature on the 1st day of October, as follows:

\$5,000.00 October 1, 1973;
\$15,000.00 October 1st of each of the years from 1974 to 1977, inclusive;
\$20,000.00 October 1st of each of the years from 1978 to 1981, inclusive;
\$25,000.00 October 1st of each of the years 1982, 1983 and 1984;
\$30,000.00 October 1st of each of the years 1985, 1986 and 1987;
\$35,000.00 October 1st 1988 and 1989;
\$40,000.00 October 1st of each of the years 1990, 1991 and 1992.

PRIOR REDEMPTION: Bonds maturing in the years 1983 to 1992, inclusive, shall be subject to redemption prior to maturity, at the option of the Village in inverse numerical order, on any interest payment date on or after October 1, 1982, at par and accrued interest plus a premium expressed as a percentage of par as follows:

3% on each bond redeemed on or after October 1, 1982, but prior to October 1, 1986;
2% on each bond redeemed on or after October 1, 1986, but prior to October 1, 1989;
1% on each bond redeemed on or after October 1, 1989, but prior to maturity.

Notice of redemption shall be given to the holders of bonds to be redeemed by publication of such notice not less than thirty (30) days prior to the date fixed for redemption, at least once in a newspaper or publication circulated in the State of Michigan, which carries as part of its regular service notices of sale of municipal bonds. No further interest payable on bonds called for redemption shall accrue after the date fixed for redemption, whether presented for redemption or not, provided the Village has money available for such redemption with the paying agent.

INTEREST RATE AND BIDDING DETAILS: The bonds shall bear interest at a rate or rates not exceeding 6% per annum, to be fixed by the bids therefor, expressed in multiples of 1/4 or 1/20 of 1%, or both. The interest on any one bond shall be at one rate only, all bonds maturing in any one year must carry the same interest rate and each coupon period shall be represented by one interest coupon. None of said bonds shall bear interest at a rate per annum which

is less than 50% of the rate borne by any other bond. No proposal for the purchase of less than all of the bonds or at a price less than 100% of their par value will be considered.

PAYING AGENT: Both principal and interest shall be payable at a bank or trust company located in Michigan qualified to act as paying agent under State or United States law, to be designated by the original purchaser of the bonds, who may also designate a co-paying agent, which may be located outside of Michigan, qualified to act as paying agent under the law of the State in which located or of the United States, both of which shall be subject to approval of the undersigned.

PURPOSE AND SECURITY: The bonds were authorized at an election held September 21, 1970, for the purpose of acquiring sanitary sewer improvements in the Village. The bonds will pledge the full faith and credit of the Village for payment of the principal and interest thereon and will be payable from ad valorem taxes, which may be levied without limitation as to rate or amount.

GOOD FAITH: A certified or cashier's check in the amount of \$10,000.00, drawn upon an incorporated bank or trust company and payable to the order of the Treasurer of the Village must accompany each bid as a guarantee of good faith on the part of the bidder, to be forfeited as liquidated damages if such bid is accepted and the bidder fails to take up and pay for the bonds. No interest shall be allowed on the good faith checks and checks of the unsuccessful bidders will be promptly returned to each bidder's representative or by registered mail.

AWARD OF BONDS: The bonds will be awarded to the bidder whose bid produces the lowest interest cost, computed by determining, at the rate or rates specified in the bid, the total dollar value of all interest on the bonds from 1973 to their maturity and deducting therefrom any premium.

LEGAL OPINION: Bids shall be conditioned upon the unqualified approving opinion of Miller, Canfield, Paddock and Stone, attorneys of Detroit, Michigan, a copy of which opinion will be printed on the reverse side of each bond, and the original of which will be furnished without expense to the purchaser of the bonds at the delivery thereof.

DELIVERY OF BONDS: The Village will furnish bonds ready for execution at its expense. Bonds will be delivered without expense to the purchaser at Detroit, Michigan. The usual closing documents, including a certificate that no litigation is pending affecting the issuance of the bonds, will be delivered at the time of the delivery of the bonds. If the bonds are not tendered for delivery by twelve o'clock noon, Eastern Standard Time, on the 45th day following the date of sale, or the first business day thereafter, or any time thereafter, it is said 45th day is not a business day, the successful bidder may on that day, or any time thereafter until delivery of the bonds, withdraw his proposal by serving notice of cancellation, in writing, on the undersigned in which event the Village shall promptly return the good faith deposit. Accrued interest to the date of delivery of the bonds shall be paid by the purchaser at the time of delivery.

THE RIGHT IS RESERVED TO REJECT ANY OR ALL BIDS.

ENVELOPES containing the bids should be plainly marked "Proposal for Sewer Bonds."

Clerk, Village of Chelsea

APPROVED:
STATE OF MICHIGAN
MUNICIPAL FINANCE COMMISSION

2. All resolutions and parts of resolutions insofar as they conflict with the provisions of this resolution be and the same hereby are rescinded.

AYES: Councilmen Barton, Roylan, Dmoch, Gorton, Musbach and Wood.

NAYS: Councilmen None.

RESOLUTION DECLARED ADOPTED.

Harold L. Pennington
Village Clerk.

Woman's Club
Program Centers on Women in Music

Woman's Club of Chelsea met Tuesday, Nov. 14, in the club room of McKune Memorial Library. The group consisted of 14 members, and two guests, Mrs. William Wade, and Mrs. Corbett of Las Vegas, Nev.

Mrs. Patrick Turcott, who had prepared the program "Women in Music," introduced the Madrigals, a singing group from Chelsea High, directed by Miss D'Ann L. Roy.

Their presentation included English and American melodies, variations on "Row, Row, Row, Your Boat," and selections from the musical "Oliver," which the high schoolers will be producing this year.

Hostesses for the evening were Mrs. Stanton Glazier and Mrs. Dean Sodi.

The next meeting will be the Christmas meeting which will be held Dec. 12.

Club and Social Activities

YOUNG HOMEMAKERS
Young Homemakers met Thursday, Nov. 16, at the home of Mrs. Richard Bareis, with Mrs. Mike Feldkamp serving as co-hostess. Members spent an enjoyable evening making candles with the assistance of Mrs. Robert Heller and Mrs. Louis Colombo. It was voted during the business meeting to donate the proceeds from the plastic party, held in October, to the local Meals on Wheels program. Refreshments were served by Mrs. Bareis and Mrs. Feldkamp. Door prize were won by Elsie Heller, Maria Colombo, and Martha Luick. The next meeting will be a family Christmas party, Dec. 16, at the fairgrounds.

KINDER KLUB
Kinder Klub members and guests met Nov. 14, at the Sylvan Town Hall where a movie was shown. Mr. George Prinzing showed the film "On Your Door Steps" with Art Linkletter, which is on Drug Prevention.

Guests were Mrs. W. Smith, Mrs. J. Roberts, Mrs. L. Hafner, and children of members and guests.

A short business meeting was held at the home of hostess Mrs. Carol Hoffman with Veretta Whitaker as co-hostess.

The next meeting will be held at the home of Mrs. Nancy Keezer on Dec. 11.

AGRI. ENTREPRENEURS
The Agriculture Entrepreneurs Farm Bureau group met at the Lions Community Hall with Mrs. and Mrs. Raymond Schairer as host and hostess.

The meeting was called to order by chairman Keith Bradbury, with the pledge to the flag and the Farm Bureau creed.

There were no committee reports.

The Christmas party on Thursday, Dec. 21, was announced as a pot-luck supper at 7 p.m., at Lions Community Hall with a gift exchange.

Harold Sias and Herbert Schairer, gave their reports as delegates to the State Convention in Grand Rapids.

Discussion was led by Raymond Schairer.

The only wife of a President to have her portrait on currency was Martha Washington. Her picture appeared on \$1 silver certificates, series 1885, 1891 and 1896.

Magic Mirror
Beauty Salon

Open Tuesday thru Friday
9 a.m. to 9 p.m.
Saturday, 8 a.m. to 3 p.m.

PHONE 665-0816

THANKSGIVING
A Time for
Sincere Thanks

That's what this holiday means to us all. We send greetings to all of our friends on this happy day.

PATTY ANN SHOPPE

Woman's Club
Program Centers on Women in Music

Woman's Club of Chelsea met Tuesday, Nov. 14, in the club room of McKune Memorial Library. The group consisted of 14 members, and two guests, Mrs. William Wade, and Mrs. Corbett of Las Vegas, Nev.

Mrs. Patrick Turcott, who had prepared the program "Women in Music," introduced the Madrigals, a singing group from Chelsea High, directed by Miss D'Ann L. Roy.

Their presentation included English and American melodies, variations on "Row, Row, Row, Your Boat," and selections from the musical "Oliver," which the high schoolers will be producing this year.

Hostesses for the evening were Mrs. Stanton Glazier and Mrs. Dean Sodi.

The next meeting will be the Christmas meeting which will be held Dec. 12.

Club and Social Activities

YOUNG HOMEMAKERS
Young Homemakers met Thursday, Nov. 16, at the home of Mrs. Richard Bareis, with Mrs. Mike Feldkamp serving as co-hostess. Members spent an enjoyable evening making candles with the assistance of Mrs. Robert Heller and Mrs. Louis Colombo. It was voted during the business meeting to donate the proceeds from the plastic party, held in October, to the local Meals on Wheels program. Refreshments were served by Mrs. Bareis and Mrs. Feldkamp. Door prize were won by Elsie Heller, Maria Colombo, and Martha Luick. The next meeting will be a family Christmas party, Dec. 16, at the fairgrounds.

KINDER KLUB
Kinder Klub members and guests met Nov. 14, at the Sylvan Town Hall where a movie was shown. Mr. George Prinzing showed the film "On Your Door Steps" with Art Linkletter, which is on Drug Prevention.

Guests were Mrs. W. Smith, Mrs. J. Roberts, Mrs. L. Hafner, and children of members and guests.

A short business meeting was held at the home of hostess Mrs. Carol Hoffman with Veretta Whitaker as co-hostess.

The next meeting will be held at the home of Mrs. Nancy Keezer on Dec. 11.

AGRI. ENTREPRENEURS
The Agriculture Entrepreneurs Farm Bureau group met at the Lions Community Hall with Mrs. and Mrs. Raymond Schairer as host and hostess.

The meeting was called to order by chairman Keith Bradbury, with the pledge to the flag and the Farm Bureau creed.

There were no committee reports.

The Christmas party on Thursday, Dec. 21, was announced as a pot-luck supper at 7 p.m., at Lions Community Hall with a gift exchange.

Harold Sias and Herbert Schairer, gave their reports as delegates to the State Convention in Grand Rapids.

Discussion was led by Raymond Schairer.

The only wife of a President to have her portrait on currency was Martha Washington. Her picture appeared on \$1 silver certificates, series 1885, 1891 and 1896.

Magic Mirror
Beauty Salon

Open Tuesday thru Friday
9 a.m. to 9 p.m.
Saturday, 8 a.m. to 3 p.m.

PHONE 665-0816

THANKSGIVING
A Time for
Sincere Thanks

That's what this holiday means to us all. We send greetings to all of our friends on this happy day.

PATTY ANN SHOPPE

SCHOOL LUNCH MENU

Week of Nov. 27 - Dec. 1

Monday, Nov. 27 — Goulash with cheese, buttered corn, hot biscuits, butter, coffee cake, apple sauce, milk.

Tuesday, Nov. 28 — Pronto burgers, buns, trimmings, potato sticks, green beans, chocolate pudding, milk.

Wednesday, Nov. 29 — Meat and vegetable casserole, creamy cole slaw, bread, apple-crisp, milk.

Thursday, Nov. 30 — Pigs in blanket, trimmings, macaroni and cheese, peaches, spice cake, milk.

Friday, Dec. 1 — Home-made bean soup, crackers, bologna sandwich, pineapple cake, milk.

For a better "steak" in the future—support your Soil and Water Conservation District programs.

Another Lot of CARPETING at BARGAIN PRICES!



Discontinued Patterns, Roll Ends, Factory Close-Outs

	Reg. off the Roll Price	SALE
9' x 12' Blue nylon shag, 12 yds.	\$131.40	\$ 71.75
12' x 19'3" Green nylon shag, 25 1/2 yds.	\$250.00	\$141.50
15' x 16' Green nylon shag, 27 1/2 yds.	\$266.00	\$162.50
12' x 14'3" Green industrial hard weave, 19 1/2 yds.	\$173.00	\$ 75.00
15' x 16' Blue nylon shag, 26 1/2 yds.	\$237.00	\$155.00
12' x 14'4" Green nylon shag, 19 yds.	\$169.00	\$ 92.80
11'4" x 11'8" Gold nylon, 14 1/2 yds.	\$11.30	\$ 72.50
10' x 15' Blue nylon shag, 16 1/2 yds.	\$ 97.85	\$ 49.80
12' x 15'8" Frosty Dell nylon, 19 1/2 yds.	\$135.50	\$ 94.00
12' x 13'6" Near white shag, 18 yds.	\$125.60	\$ 89.60
12' x 14'6" Green-nylon shag, 19 1/2 yds.	\$153.70	\$ 94.00
7'9" x 19'6" Beige nylon, 16 1/2 yds.	\$159.00	\$ 63.50
11'2" x 12' Ivory and gold nylon shag, 15 yds.	\$134.25	\$ 82.35
12' x 12' Olive rust, rubber back, 16 yds.	\$111.20	\$ 68.40
11' x 15' Green gold rubber back, 18 yds.	\$159.00	\$ 99.60
15' x 16'4" Light green nylon plush, 29 1/2 yds.	\$209.00	\$137.00
9'3" x 11' Blue nylon shag, 10 yds.	\$ 79.50	\$ 49.80
6'5" x 12' Green rubber back, 8 1/2 yds.	\$ 50.50	\$ 39.50
8'8" x 8'8" Green nylon shag, 8 yds.	\$ 87.60	\$ 39.60
8'6" x 12'0" Light beige nylon twist, 11 1/2 yds.	\$101.40	\$ 56.40
9'5" x 9'5" Gold nylon twist, 7 1/2 yds.	\$ 65.60	\$ 36.00
8'4" x 12' Variegated green nylon, 11 yds.	\$ 87.45	\$ 43.70
8'10" x 12' Medium green nylon shag, 11 1/2 yds.	\$117.00	\$ 71.76
9'5" x 9'11" Light brown nylon, 9 1/2 yds.	\$ 85.00	\$ 44.30
7'5" x 12' Brown-gold shag, 10 yds.	\$ 79.50	\$ 45.00

ENDS OF ROLLS (by the yard)

	SALE
12 ft. Ivory-green shag: Reg. \$7.95 yd.	\$ 4.98
12 ft. Gray hardweave, rubber back. Reg. \$8.95 yd.	
12 ft. Blue nylon shag. Reg. \$6.95 yd.	
12 ft. Green heavyweight shag. Reg. \$10.95 yd.	\$ 6.49

SLIGHTLY USED CARPET

10' x 15'2" Blue shag. Reg. \$135.00 \$50.00

SEVERAL PIECES USED CARPET, in fair condition
1-11' x 14', 1-11'x12', 1-13'6" x 18'6", 1-4'4" x 16'6", 1-8'8" x 23'6"
at \$1.00 per sq. ft.

Many small pieces of carpeting for Campers, House Trailers, Small Rooms, Runners, etc., at VERY LOW PRICES!

MERKEL
HOME FURNISHINGS

Open Mon. & Fri. Until 9 Phone Chelsea 475-8621

Gridders of the Week



ISHMAEL PICKLESIMER (33) is one of two sophomores on this year's varsity squad because of his outstanding kicking ability. He tried his luck in a PP&K contest in the 6th grade, but didn't make any headlines. He says it was fine coaching by Bert Kruse that gave him the knack. He hopes that some more good coaching and a lot of hard work will make him a record breaker with the shot put by the time he is a senior. "I'm trying to increase my throwing distance by four feet a year," he says. In 8th grade, he tossed it 33 feet, and by his freshman year, he could toss 42 feet. So far so good. The record is 50 feet. He'd also like to throw the discus but it's outlawed in two states; Michigan is one of them.

DARYLL WEST (66) is the other proud sophomore in the varsity lineup. Like Ishmael, he looks forward to next year when he'll be playing with his classmates again. Because of his ability, he's played a lot with upperclassmen. When he was given the opportunity with three others to go to football camp with the varsity, he didn't give much thought to refusing it. "I thought I'd give it a try," he says. Daryll's sports affections are divided "in a toss up" between football and wrestling. He has already begun wrestling workouts even though it's not required of football players yet. Says Daryll, "there's stiff competition in the 145-lb. class, both here and elsewhere." Pudge, as this stocky athlete is sometimes called, is one of eight children. He has five sisters and two brothers, and is the second youngest in the family.

CHELSEA VILLAGE COUNCIL PROCEEDINGS

November 7, 1972
Regular Session

This meeting was called to order at 8:00 p.m. by President Fulks. Present: President Fulks, Administrator Weber, Clerk Pennington. Trustees: Gorton, Dmoch, Wood, Musbach, Borton and Boylan.

Others present were Civil Defense Director E. Beach, F. Ewald, E. Michelson, George Winans, Police Chief Meranuck, Richard Harvey and Mr. Zinton.

The minutes of the regular session of October 17th were read and approved.

Motion by Wood, supported by Borton, to authorize Administrator Weber to obtain bids on a 1973 Police car per specifications. The bids will be with and without trade-in of a 1965 Ford. Roll call: Yeas all. Motion carried.

Mr. Zinton, Mr. Michaelson, and Mr. Ewald asked about the procedure of dedicating Gene Drive to the Village of Chelsea. President Fulks expressed the council questions in relation to future development of this street before acceptance by the Village. Further action was deferred until additional plans are presented by the developing firm.

Mr. Robert Daniels presented views regarding future development of Lanewood No 3. The main

question of concern is the improvement to the Village Treatment Plant as required by the State Department of Health. The Village is presently waiting for further information from the State Department of Health.

Mr. George Winans, representing the Downtown Businessmen's Association, discussed the need and availability of additional off-street parking in the business area. Availability of funds for purchasing an additional site was reviewed. Administrator Weber and Mr. Winans will present firm information at the next Council meeting on this matter.

A motion by Borton, supported by Wood, for a resolution amending the resolution of October 3, 1972, authorizing the sale of General Obligation Bonds for the Sanitary Sewer System. Roll call: Yeas all. Motion carried.

A motion by Musbach, supported by Dmoch, supporting the request for transfer of ownership of the 1972 Class C and SDM licensed business from Donald D. McKinley (Pub) to Walter and Louise Supron, as required by the Michigan Liquor Control. Roll call: Yeas all. Motion carried.

A motion by Borton, supported by Musbach, to authorize payment of the following bills for printing

of blue prints and specifications for the Sewer Trunk Expansion Program. Payment to be made from the Electric Fund with same sums repaid upon sale of the sewer bonds: Newfax Company, \$36.00; A-1 Letter Shop, \$42.00. Roll call: Yeas all. Motion carried.

A motion by Boylan, supported by Wood, appointing Robert L. Steger, CPA, to audit the Village Books for the fiscal year 1972 and to submit reports thereof. Roll call: Yeas all. Motion carried.

A motion by Boylan, supported by Wood, to amend Section 4, Paragraph C (12) of Ordinance No. 74 (Recreation Council Fiscal Year). Roll call: Yeas all. Motion carried.

Consumer Powers Company has made application to the Federal Power Commission to increase the rate charged to the Village of Chelsea. No official action was taken.

A request from Bell Telephone Company to lay underground cable through two various areas of the Village was tabled for further information as to timing of this project.

A lengthy discussion was held regarding the storage of wrecked or dismantled cars at service stations. Unanimous decision of the Council to take appropriate legal action in this matter.

A letter was read from Ayres, Lewis, Norris and May, Inc., regarding improvements to the water plant. No action was taken.

Motion by Gorton, supported by Borton, to pay bills as submitted. Roll call: Yeas all. Motion carried.

Motion by Boylan, supported by Wood, to adjourn. Roll Call: Yeas all. Motion carried. Meeting adjourned.

H. Pennington, Clerk.

4-H Clubs

SCISSORRETTES
We had a treat and then we talked about going to Bimbo's for our Christmas party. Next week we're going to work on macramé. We are working on our outfits at home.
Cathy Villemure, reporter.



NOW YOU CAN LOSE UGLY FAT

Start losing weight today OR MONEY BACK. MONADEX is a tiny tablet that will help curb your desire for excess food. Eat less-weight less. Contains no dangerous drugs and will not make you nervous. No strenuous exercise. Change your life start today. MONADEX costs \$3.00 for a 20 day supply and \$5.00 for twice the amount. Lose ugly fat or your money will be refunded with no questions asked by:

Chelsea Drug Store, Chelsea
Mail Orders Filled

Letters to the Editor

To the Editor:
I think my subscription ran out Jan. 1 for your paper. As I do not want to miss the hometown paper, you will find my check for \$6 enclosed.

Hope you all have had a nice summer and you will not have a lot of snow to clean off the walks this winter.
Carl H. Fletcher
18 Normandy Rd.
Asheville, N. C.

To the Editor:
I would like to inquire of the people of the Chelsea community, as to who they really think they are! Do they think their community is so great, so completely perfect?

I am, in part, referring to a filmstrip, shown at the St. Mary's School Hall, Oct 3, on the "Right to Life." This film-strip expressed what abortion does to a human life. There were few more than 10 adults, from the community interested enough in this stage of life to attend.

Secondly, I am, referring to a film entitled "On Your Doorstep," shown at Our Savior Lutheran church on Nov. 12. This film was about a very serious problem in many communities, including our own—drug abuse!

There were less than 50 students and adults, interested enough to hear the many facts presented in the film by Art Linkletter.

Sixty people, in a community of several hundred, thought enough of their society to devote an hour of their time to learn some truths! Do you other people think that is you ignore the prob-

lem, it will go away? Or are you sure that such a thing can never open up in your respectable community?

Thanks to many of you silent people, the abortion proposal was voted down, on Nov. 7, this time, that is. But what about next time? And, what about the drug abuse in our community? Isn't the time to do something about that now, while we still have a chance to help our young people? Let's become interested, for them!

Sally Kargel.

Personal Notes

Mrs. Mary Haselschwerdt and Mrs. Leroy Satterthwaite spent several weeks with the former's children, Lt. Col. and Mrs. Robert L. Toney, and family at Batavia, Germany. While there, they saw the Matterhorn in Switzerland, Amsterdam, Rotterdam, and Island of Markin, Brussels, Belgium, the Palace of Ludwig II, and the Olympic grounds at Munich, Germany. They also took a boat ride on the Rhine.

Mrs. Thomas Lancaster and Mrs. Mary Clark entertained at a brunch party Nov. 16, at Mrs. Lancaster's home, for Mrs. Jeff Coburn and Mrs. Marvin Brightwell, who just moved into the neighborhood. Guests were Mrs. Floyd Balmer, Mrs. John McElin, Mrs. Joe Schultz, Mrs. Arthur Roe, and Mrs. Jay Hopkins.

For Bounties & Blessings Be Thankful...



GIRL SCOUTS
TROOP 169—
Brownie Troop 169 opened their meeting with the flag ceremony. They learned about the Brownie Book. We sang songs and made turkeys out of apples, tooth picks, and colored paper that we will take to the Chelsea Methodist Home next week.
Kathleen Morris, scribe.

TROOP 442—
Girl Scout Troop 442 has been busy working on the hospitality badge. Everyone has been writing thank you notes and letters to a sick friend. For Thanksgiving we made turkeys out of pine cones. Jill Updegraff will be leaving our troop soon and moving to Cadillac. We will miss her.
Dawn McDowell, scribe.

TROOP 689—
We got our calendars today. We are going to be selling them all day. We had our flag ceremony and then we started our decoupage. We picked a troop representative for inter-troop activities. Nancy Heller was picked. At the meeting she is going to discuss what the troops in Chelsea do. Some of the girls are writing to people at the Methodist Home.
Diane Thompson, scribe.

When removing gelatin from a mold, moisten the plate and top of mold with wet fingers. The moist surfaces make it possible to slide the gelatin to the center of the plate after taking it out of the mold.

I-94 Missing Link Opened to Traffic

Lansing—What Michigan motorists have been looking forward to for many years—a direct, uninterrupted freeway route to Chicago and points west—has become a reality.
The last uncompleted section of Interstate 94 Freeway in Indiana, an 18-mile section around Michigan City was opened by the Indiana State Highway Commission Thursday, Nov. 2. It is the final "missing link" on the freeway between Port Huron and Chicago. Michigan's 274-mile segment of I-94 extends from the Canadian border at Port Huron south and west to the Indiana line near New Buffalo. Nationally, I-94 extends a total of 1,607 miles from Port Huron to Billings, Mont.

CELEBRATE THANKSGIVING IN CHURCH



Happy Thanksgiving

Just as they expressed thanks, we thank you for your continued patronage and friendships.

A. D. MAYER AGENCY

"Your Protection Is Our Business"
115 PARK STREET PHONE 475-2030

Magnavox

Gift Values for a merrier Christmas

A. AM Portable Model 1008—is only 4 1/2" high, but offers great room-filling AM sound! It has an automatic volume control, built-in antenna, and private-listening earphone. Batteries are included with this outstanding Magnavox radio value. Buy several—ideal for anyone—for young or old.

\$8.95

B. Model 9035 Cassette Recorder—ideal for office, home or school—offers superb reproduction of voice or music. With AC/Battery operation, pushbutton Cassette eject, record level, battery meter and built-in condenser microphone. Cassette and batteries are included.

\$59.95

C. Model 9029 Cassette Recorder—offers remarkable performance... at a remarkably small price. Features include switchable AC/Battery operation, Cassette eject pushbutton, plus many more. Batteries and blank Cassette included too! A wonderful gift for anyone on your Christmas list!

\$39.95

D. Three-Band model 1286—brings you great FM/AM listening, as well as the excitement of Public Service Band (with squelch control) which lets you tune in on Police, Fire, Mobile Phone and Instant Weather broadcasts. Batteries, too.

\$39.95

E. Model 1781—with illuminated flip digital clock and radio dial, wake-to-music and wake-to-alarm controls. 24-hour alarm set and 3-hour slumber switch. Compact space-saving styling, too.

\$44.95

F. Model 1778—is dramatically distinctive and has an illuminated flip digital clock, wake-to-music and wake-to-alarm controls, 24-hour alarm set, plus tone control and slide controls, as well as no-drift FM/AFC. Great to listen to—any time of the day.

\$39.95

G. AM Radio-Phonograph model 2505—lets you enjoy AM reception as well as your favorite recordings. Its features include Radio/Phono Selector switch, two-position Tone control, Volume control, plus a built-in Antenna. And it's AC or battery-powered (batteries included).

\$34.95

H. Model 9043 FM/AM Radio/Cassette/Recorder—has AC/Battery operation, plus: rotary controls for level and tone, pushbutton record control, slide controls, pushbutton functions, built-in condenser microphone, no-drift FM/AFC and earphone. With batteries and cassette.

\$79.95

I. FM/AM Model 1221—offers performance far in excess of its size and price! It has no-drift FM/AFC, slide rule dial with log scale, automatic volume control, earphone and telescoping antenna. And, it's complete with batteries! Handy wrist carrying strap, also.

\$14.95

J. Model 1784—in uniquely pedestal styling, has an illuminated flip digital clock, wake-to-music and wake-to-alarm controls, 24-hour alarm set, plus 3-hour slumber switch. In grained vinyl-clad hardboard.

\$49.95

BIG 8 x 10 LIVING COLOR PORTRAIT

A PORTRAIT SPECIAL FOR EVERYONE

AT 99¢
Plus 75¢ for handling



Compare at \$25.00!

- GENUINE NATURAL COLOR PORTRAITS Not the old style tinted or painted Black & White photos.
- SELECTION OF PROOFS 4-6 Photos to choose from.
- FOR ALL AGES Babies, children, adults. Groups photographed at an additional small charge.
- FREE TO ALL SENIOR CITIZENS Free 8x10 living color portrait to all customers over 60 years of age.
- LIMITED OFFER! One per subject, one per family.
- Advertised Special Head & Shoulders Only

TELL YOUR FRIENDS ABOUT THIS SPECIAL OFFER

RICK'S MARKET
CHELSEA

Thursday, Nov. 30

10 a.m. to 12 noon; 1 p.m. to 6 p.m.

HEYDLAUFF'S

113 North Main St., Chelsea

Phone 475-1221